



PRODUCT STAR RATINGS GUIDE



1

BLAST POTS

All pressure vessels are certified in accordance to market requirements including, but not limited to ASME, PED, AS/NZS, DOSH, MOM, etc.



BP50-1 Blast Pot
CAT-0101-01
Page 4 to 7

BP110-1 Blast Pot
CAT-0101-02
CAT-0101-08
Page 8 to 15

BP300-1 Blast Pot
CAT-0101-09
Page 16 to 19

BP316-1 Blast Pot
CAT-0101-03
Page 20 to 23

BP316-2 Blast Pot
CAT-0101-04
Page 24 to 27

BP600-1 Blast Pot
CAT-0101-11
CAT-0101-12
CAT-0101-05
Page 28 to 39

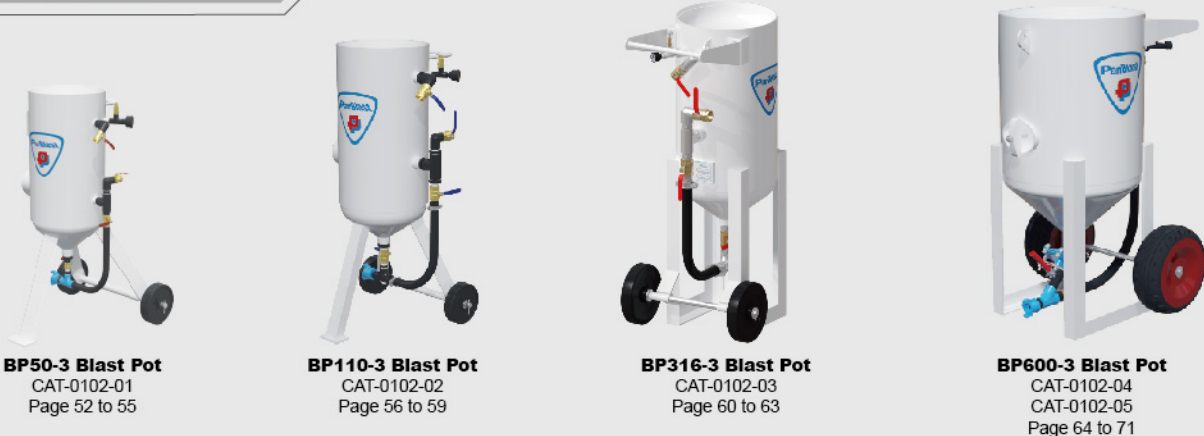
BP600-2 Blast Pot
CAT-0101-06
Page 40 to 43

BP800-1 Blast Pot
CAT-0101-07
Page 44 to 47

BP800-4 Blast Pot
CAT-0101-13
Page 48 to 51

BP Series Automatic Blast Pots are available in several configurations, which include manual adjust and pressure-hold abrasive metering valves, combination or separate remote control valves, and corresponding styles of deadman handles including optional hands-free types. This bread-and-butter product series is especially suited for compressed air blasting applications with low to medium production volumes.

AUTOMATIC



BP50-3 Blast Pot
CAT-0102-01
Page 52 to 55

BP110-3 Blast Pot
CAT-0102-02
Page 56 to 59

BP316-3 Blast Pot
CAT-0102-03
Page 60 to 63

BP600-3 Blast Pot
CAT-0102-04
CAT-0102-05
Page 64 to 71

BP Series Manual Blast Pots are fitted with economical ball valve controls for use in conjunction with human pot tenders during operation. This product series can be used in markets that do not prohibit the use of manual control blast pots using human pot tender operators.

MANUAL



MB600-2 Blast Pot
CAT-0103-02
Page 72 to 75



SB600-2 Blast Pot
CAT-0103-05
Page 80 to 83



SB316-2 Blast Pot
CAT-0103-06
Page 76 to 79



CB800 Blast Pot
CAT-0103-03
CAT-0103-04
Page 84 to 91

Specialty Blast Pots include the CB Series Continuous Blasters, which are double chamber, single or multiple outlet pressure vessels that are ideal for non-stop high volume blasting applications. Other specialty items include the SB Series, which is specially configured for soda, or sodium bicarbonate blasting, and the MB series, which is suited for delicate ultra-low pressure blasting, or paint stripping using plastic media.

SPECIALTY



BB120S-2 Blast Pot - Electric
CAT-0104-01
Page 92 to 95



BB120T-2 Blast Pot - Pneumatic
CAT-0104-03
Page 100 to 103



BB120S-2 Blast Pot - Pneumatic
CAT-0104-02
Page 96 to 99



BB120T-2 Blast Pot - Electric
CAT-0104-04
Page 104 to 107

BB Series Bulk Blasters are ideal for high volume blasting applications in the field using multiple operators. Both trailer and skid mount variants are available, and each can be configured for use with pneumatic remote controls or electric remote controls for extended blasting distance.

BULK

2

REMOTE CONTROL VALVES

PanBlast remote control valves are for pressure vessel air inlet and/or air outlet control, and are available in both BSP and NPT thread configurations.



Air inlet valve variants include Sola, Tandem and Helix types.

- For small capacity blast pots



Sola 5 Inlet Valve Assembly
CAT-0201-01
Page 110 to 113



Sola 5 NPT Inlet Valve Assembly
CAT-0201-02
Page 114 to 117

- For small, large, pressure hold & bulk blast pots



3/4" Tandem NPT Valve Assembly
CAT-0201-03
Page 118 to 121



1" Tandem NPT Valve Assembly
CAT-0201-04
Page 122 to 125



1-1/4" Tandem NPT Valve Assembly
CAT-0201-05
Page 126 to 129



1-1/2" Tandem NPT Valve Assembly
CAT-0201-06
Page 130 to 133

- For medium capacity blast pots



Sola 10 NPT Inlet Valve Assembly
CAT-0201-07
Page 134 to 137

- For large capacity blast pots



Sola 30 NPT Inlet Valve Assembly
CAT-0201-08
Page 138 to 141

- For large capacity blast pots



Helix 100 Inlet Valve Assembly
CAT-0201-09
Page 142 to 145



Helix 100 NPT Inlet Valve Assembly
CAT-0201-10
Page 146 to 149

AIR INLET



Air exhaust valve variants include Sola, HiFlo, Diaphragm Dump and Helix types.

- Diaphragm activated



Sola 5 NPT Exhaust Valve
CAT-0202-01
Page 150 to 153

- Piston activated depressurization



HiFlo NPT Exhaust Dump Valve Assembly
CAT-0202-05
Page 166 to 169

- Fast diaphragm depressurization



1" NPT Diaphragm Dump Valve
CAT-0202-04
Page 162 to 165

- Piston activated depressurization



Helix 50 Outlet Valve Assembly
CAT-0202-02
Page 154 to 157



Helix 50 NPT Outlet Valve Assembly
CAT-0202-03
Page 158 to 161

- Cyclonic filtration of fines and dust from exhaust air



AbraFlo NPT Abrasive Trap II Assembly
CAT-0202-06
Page 170 to 173

AIR EXHAUST



Combination valve variants include UniFlo, Kombi and Helix 150.

- Durable duty
- Inlet/exhaust hose pinch combo



Kombi NPT Remote Control Valve
CAT-0203-06
Page 184 to 187

- Heavy duty
- Inlet/exhaust hose pinch combo



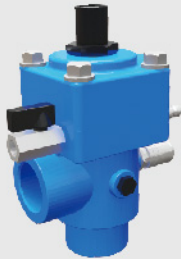
Kombi II NPT Remote Control Valve
CAT-0203-07
Page 188 to 191

- High flow
- Inlet/exhaust hose pinch combo



Kombi III NPT Remote Control Valve
CAT-0203-10
Page 192 to 195

- Lightweight
- Inlet/exhaust combo



UniFlo Valve Assembly with Fittings
CAT-0203-02
Page 176 to 179

- Modular
- Piston/diaphragm combination



Helix 150 Valve Assembly
CAT-0203-08
Page 196 to 199



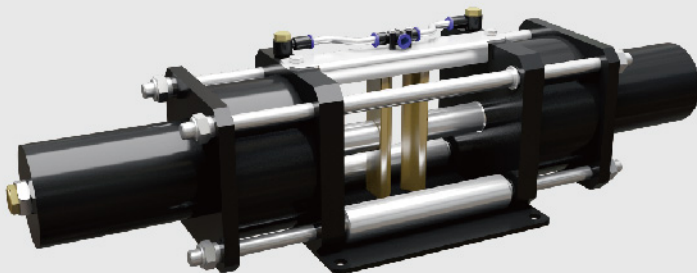
Helix 150 NPT Valve Assembly
CAT-0203-09
Page 200 to 203

COMBINATION



Pinch valve variants include Pinch Valve and Safe-T-Pinch.

- Dual ram
- Safety spring closure
- Wide blast hose entry throat



Safe-T-Pinch Valve Assembly
CAT-0204-02
Page 208 to 211

- Single ram
- Rugged cast iron construction



Pinch Valve NPT Assembly
CAT-0204-01
Page 204 to 207

PINCH

3

REMOTE CONTROL HANDLES

PanBlast remote control handles are for control of pressure blast pot operation remotely, and are available in both pneumatic and electric configurations (for extended control distance and faster response times).



Air bleed variants include AirFlo and QuikStop IIS.

- For small, large, pressure hold & bulk blast pots



AirFlo Pneumatic Control Handle
CAT-0301-02
Page 218 to 221

- For small, large, pressure hold & bulk blast pots



AirFlo NPT Pneumatic Control Handle
CAT-0301-03
Page 222 to 225

- Hands-free operation, safety ball and hand strap



QuikStop IIS Pneumatic Control Handle
CAT-0301-01
Page 214 to 217

AIR BLEED



Non-bleed variants include AirStop, AirStop II, AirStop IV and Auto-Lok.

- Lightweight, safety lock-out button



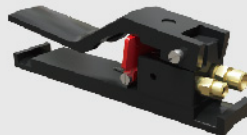
AirStop Pneumatic Control Handle
CAT-0302-01
Page 226 to 229

- Lightweight, safety lock-out button



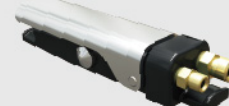
AirStop NPT Pneumatic Control Handle
CAT-0302-02
Page 230 to 233

- Robust wide lever, dual stage lever lock



AirStop II NPT Pneumatic Control Handle
CAT-0302-03
Page 234 to 237

- Extended lever, safety lock-out button



AirStop IV NPT Pneumatic Control Handle
CAT-0302-05
Page 242 to 245

- Compact, quick blast hose attachment



Auto-Lok Control Handle Assembly
CAT-0302-04
Page 238 to 241

NON BLEED



Electric variants include AirFlo, AirStop, AirStop II and QuikStop IIS.

- Weather proof switch, long lever type



AirFlo Electric Control Handle
CAT-0303-01
Page 250 to 253

- Sealed encased switch, compact design



AirStop Electric Control Handle
CAT-0303-02
Page 254 to 257

- Enclosed switch, extended service life



AirStop II Electric Control Handle
CAT-0303-03
Page 258 to 261

- Ergonomic operation, replaceable switch



QuikStop IIS Electric Control Handle
CAT-0303-05
Page 246 to 249

ELECTRIC



Pneumatic Twinline Hose variants.

- Color coded, quick disconnects



10M (33') Twinline Hose Assembly
CAT-0304-01
Page 274 to 275

- Color coded, quick disconnects



20M (66') Twinline Hose Assembly
CAT-0304-01
Page 274 to 275

- Color coded extension, quick disconnects



20M (66') Twinline EXT/Hose Assembly
CAT-0304-01
Page 274 to 275

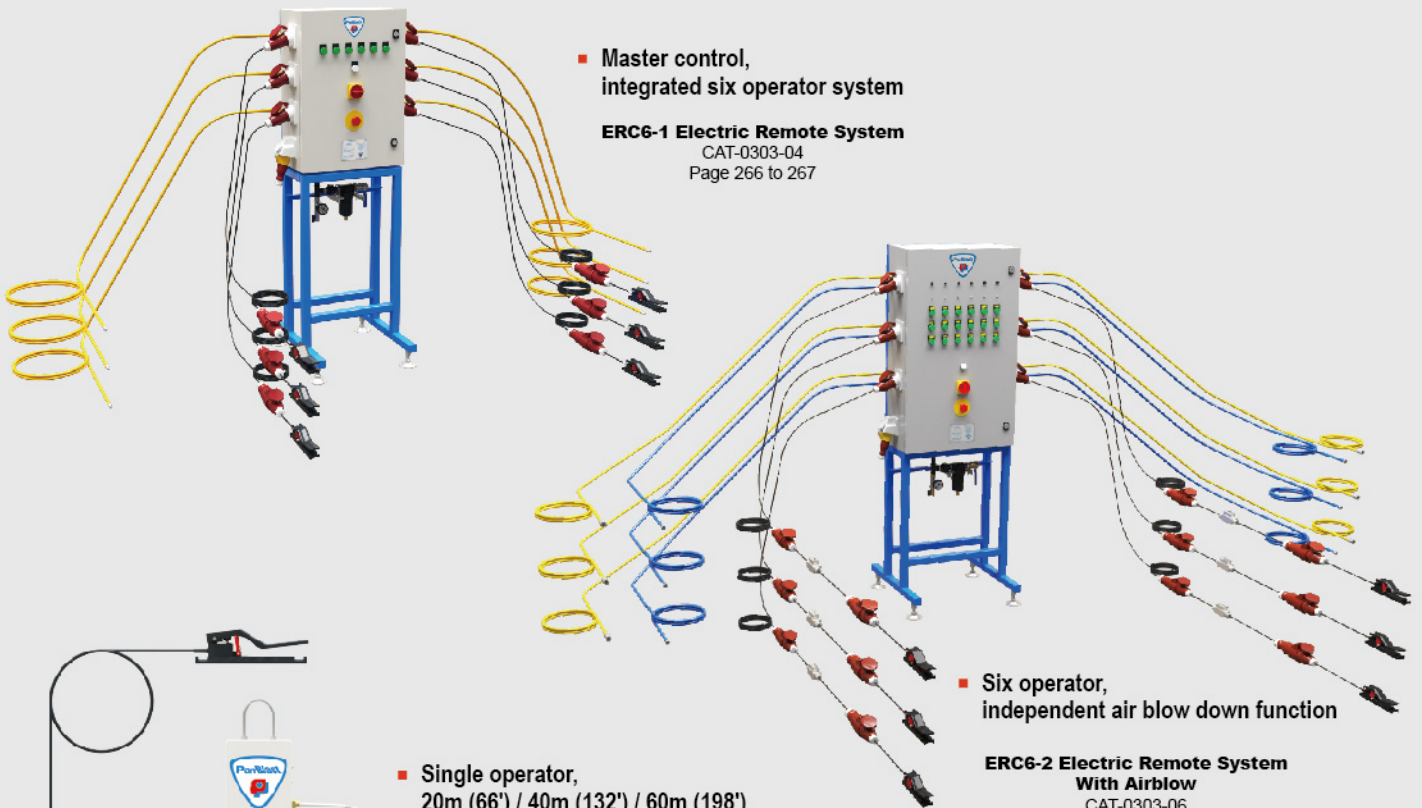
TWINLINE HOSES



Electric Remote System.

- Master control, integrated six operator system

ERC6-1 Electric Remote System
CAT-0303-04
Page 266 to 267



- Six operator, independent air blow down function

ERC6-2 Electric Remote System With Airblow
CAT-0303-06
Page 268 to 269

- Single operator, 20m (66') / 40m (132') / 60m (198') remote conversion kit

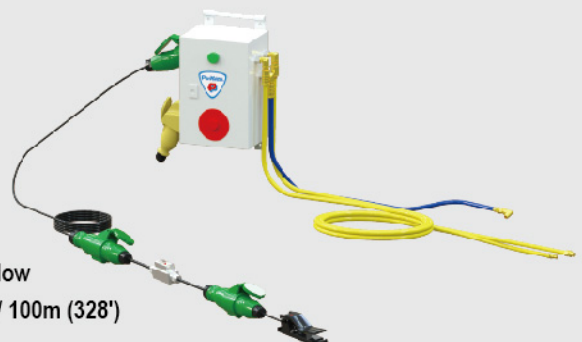
Conversion Kit - Single Operator
20m (66') Remote Conversion Kit
40m (132') Remote Conversion Kit
60m (198') Remote Conversion Kit

CAT-0305-01
Page 270 to 273



- Electric Remote System with Airblow 20m (66') / 40m (132') / 60m (198') / 100m (328')

CAT-0303-08
Page 264 to 265



ELECTRIC REMOTE SYSTEM

4

ABRASIVE METERING VALVES

Abrasive metering valves are used to control media feed rate from the blast pot storage hopper into the blast hose pusher line, and are available in manual/automatic plunger, metering disc and ball valve configurations.



Manually operated for pressure release blast pots, low profile with precision media metering.



CAT-0701-01
Page 278 to 281

Fina Valve 1-1/4" M X 1-1/4" M Assembly
Fina Valve 1-1/2" M X 1-1/2" M Assembly
Fina Valve 1-1/4" M X 1-1/2" M Assembly
Fina Valve 1" F X 1-1/2" M Assembly

- All abrasive media
- Metering knob with urethane sleeve



CAT-0701-02
Page 282 to 285

Fina Valve NPT 1-1/4" M X 1-1/4" M
Fina Valve NPT 1-1/2" M X 1-1/2" M
Fina Valve NPT 1-1/4" M X 1-1/2" M
Fina Valve NPT 1" F X 1-1/2" M



CAT-0701-03
Page 286 to 289

Fina II Valve 1-1/4" M X 1-1/4" M
Fina II Valve 1-1/2" M X 1-1/2" M
Fina II Valve 1-1/4" M X 1-1/2" M
Fina II Valve 1" F X 1-1/2" M
Fina II Valve 1/2" M X 3/4" F

- All abrasive media
- Metering knob with urethane sleeve
- Abrasive drain port
- Improved serviceability



CAT-0701-04
Page 290 to 293

Fina II Valve NPT 1-1/4" M X 1-1/4" M
Fina II Valve NPT 1-1/2" M X 1-1/2" M
Fina II Valve NPT 1-1/4" M X 1-1/2" M
Fina II Valve NPT NPT 1" F X 1-1/2" M

MANUAL PLUNGER



Traditional disc & lever media metering, general contractor usage for fast start-up and shutdown applications.



- All abrasive media
- Low profile
- Lever handle operated

Junior Plana NPT Valve
CAT-0703-01
Page 318 to 321



- Not for metallic media
- 45 degree configuration
- Lever handle operated

Plana Valve Assembly
CAT-0703-02
Page 322 to 325



- All abrasive media
- 45 degree configuration
- Lever handle operated
- Easy maintenance

Plana II Valve Assembly
CAT-0703-03
Page 326 to 329



- All abrasive media
- 45 degree configuration
- Lever handle operated
- Easy maintenance

Plana II NPT Valve Assembly
CAT-0703-04
Page 330 to 333

METERING DISC



Auto pilot air operated for pressure hold & pressure release systems, media saving characteristics, optional remote abrasive cut off.



- For fine media usage
- Tungsten plunger

Corsa NPT 1-1/4" with Urethane Sleeve
Corsa NPT 1-1/2" with Urethane Sleeve

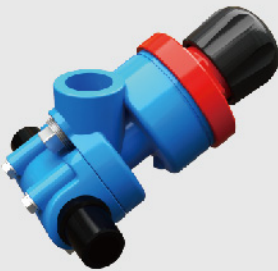
CAT-0702-01
Page 294 to 297



- For fine media usage
- Tungsten plunger
- Extended life

Corsa NPT 1-1/4" with Tungsten Sleeve
Corsa NPT 1-1/2" with Tungsten Sleeve

CAT-0702-02
Page 298 to 301



- All abrasive media
- Easy maintenance
- Solid tungsten plunger & sleeve
- Abrasive drain port

Corsa II 1-1/4" with Urethane Sleeve
Corsa II 1-1/2" with Urethane Sleeve

CAT-0702-03
Page 302 to 305



Corsa II NPT 1-1/4" with Urethane Sleeve
Corsa II NPT 1-1/2" with Urethane Sleeve

CAT-0702-05
Page 306 to 309



- All abrasive media
- Easy maintenance
- Solid tungsten plunger & sleeve
- Abrasive drain port
- Extended life

Corsa II 1-1/4" with Tungsten Sleeve
Corsa II 1-1/2" with Tungsten Sleeve

CAT-0702-04
Page 310 to 313



Corsa II NPT 1-1/4" with Tungsten Sleeve
Corsa II NPT 1-1/2" with Tungsten Sleeve

CAT-0702-06
Page 314 to 317

AUTOMATIC PLUNGER



Economical ball valve operation for applications that do not require precise metering.



- Suited to garnet media
- Fixed urethane metering orifice
- Stainless steel body

Enviro Valve Assembly

CAT-0704-01
Page 334 to 335

BALL VALVE

5

BLAST NOZZLES

The PanBlast™ blast nozzle range is suited for general and specialty blasting applications. They are available in durable tungsten or boron carbide liners and feature straight, venturi or injector nozzle designs, and are typically fitted with aluminum jacket protection.



CAT-1501-01 Page 338 to 339



ATN-2S



ATN-3S



ATN-4S



ATN-5S



ATN-6S



ATN-8S

- Durable tungsten carbide liner
- For smaller pots, cabinets and pipe blasting tools

ATN-S SERIES



CAT-1501-01 Page 338 to 339



ABN-2S



ABN-3S



ABN-4S



ABN-5S



ABN-6S



ABN-8S

- Extended life boron carbide liner
- For smaller pots, cabinets and pipe blasting tools

ABN-S SERIES



CAT-1501-02 Page 340 to 341



ATN-3M



ATN-4M

- Enlarged blast pattern
- Durable tungsten carbide liner
- For smaller pots, cabinets and pipe blasting tools

ATN-M SERIES



CAT-1501-02 Page 340 to 341



ATN-5T



ATN-6T

- Enlarged blast pattern
- Durable tungsten carbide liner
- For smaller pots, cabinets and pipe blasting tools

ATN-T SERIES



CAT-1502-01 Page 342 to 343



ATN-4



ATN-5



ATN-6



ATN-7



ATN-8

- Durable tungsten carbide liner
- Wide throat long venturi
- Coarse contractor thread prevents freezing

ATN SERIES



CAT-1502-01 Page 342 to 343



ABN-4



ABN-6



ABN-8

- Extended life boron carbide liner
- Wide throat long venturi
- Coarse contractor thread prevents freezing



ABN-5



ABN-7

ABN SERIES



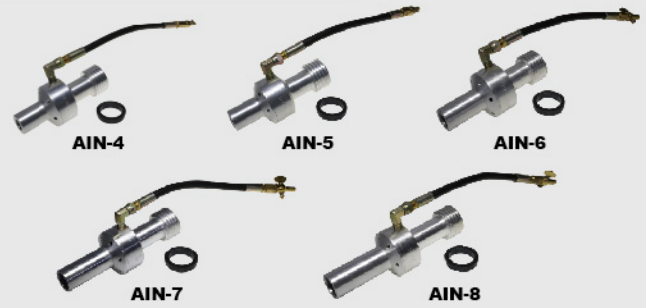
- Extended life boron carbide liner
- Wide throat long venturi
- Coarse contractor thread prevents freezing
- Urethane sleeve for drop impact resistance

UBN SERIES

- Extended life boron carbide liner
- Wide throat long venturi
- Coarse contractor thread prevents freezing
- Urethane sleeve for drop impact resistance
- Long venturi provides supersonic abrasive velocity

UBV SERIES

- 35% wider blast pattern for higher productivity
- Dual venturi configuration
- Durable tungsten carbide liner
- Coarse contractor thread prevents freezing

ATV SERIES

- Dust-free slurry blasting
- Adjustable water atomization
- Durable tungsten carbide liner
- Coarse contractor thread prevents freezing

AIN SERIES

- Corner and angle blasting
- Available in single or triple outlets
- Durable tungsten carbide liner
- Coarse contractor thread prevents freezing

SIDEWINDER SERIES

Wet Head Assembly
CAT-1505-01
Page 356 to 357

- Dust reducing water jacket
- Adjustable water ring
- Can be fitted to most commercial nozzles



Hypodermic Needle Gauge
CAT-1505-02
Page 360 to 361

- Blast pressure measurement at nozzle
- Practical and economical
- Can be used with most commercial nozzles

ACCESSORIES

- Economical hardened alloy liner
- Long venturi
- Can be used with standard nozzle holders



CVN-5



CVN-6



CVN-7



CVN-8

CVN SERIES

6

BLAST HOSES

The PanBlast™ range of blast hoses are manufactured from virgin natural rubber, and have 2 or 4 ply braided high tensile textile cord reinforcement. The blast hose protective covers are abrasion, weather and ozone resistant for extended durability during outdoor use. The use of safety whip checks with blast hoses is strongly recommended to prevent serious injury in the event of hose or coupling failure.

CAT-1401-01 Page 364 to 365



- Lightweight
- 15 bar (217 psi) pressure rating

2 PLY ENDUROLITE



- Lightweight
- 20 bar (290 psi) pressure rating

4 PLY ENDUROLITE



- Extended wear life
- 15 bar (217 psi) pressure rating

2 PLY ENDURO



- Extended wear life
- 20 bar (290 psi) pressure rating

4 PLY ENDURO



CAT-0403-06 Page 388 to 389



3 mm Whip Check - Hose/Tool



6 mm Whip Check - Hose/Tool

- For connection at equipment-to-hose couplings
- Install in fully extended position

HOSE-TO-TOOL WHIP CHECKS



CAT-0403-06 Page 388 to 389



3 mm Whip Check - Hose/Hose



6 mm Whip Check - Hose/Hose

- For connection at hose-to-hose couplings
- Install in fully extended position

HOSE-TO-HOSE WHIP CHECKS

Nozzle Holders			Blast Hoses			Optional Whip Checks		Couplings					
Holder	Washer	Screws	OD	ID	Ply	3 mm Hose To Hose	3 mm Hose To Tool	A		B		Locking Pins	Screws
								Couplings	Gaskets	Couplings	Gaskets		
NNH-0	RNW-1	8G x 1/2	28 mm (1-1/8")	13 mm (1/2")	LD - 2 Ply			SHC-0	BCG-0	STC-0	BCG-0	BCP-1	8G x 1/2
NNH-1/2	RNW-25/ RNW-32	10G x 1/2	34 mm (1-5/16")	19 mm (3/4")	LD - 2 Ply	3 mm Hose To Hose	3 mm Hose To Tool	NHC-3/4	NCG-1	NTC-1	NCG-2	NCP-1	10G x 1/2
ANH-1/2	RNW-1	10G x 1/2		13 mm (1/2")	HD - 2 Ply			NHC-1/2	BCG-1/2	NTC-1/2	BCG-1/2	BCP-1	10G x 1/2
								SHC-1/2	BCG-1/2	STC-1/2	BCG-1/2	BCP-1	10G x 1/2
NNH-1	RNW-25/ RNW-32	10G x 1/2	38 mm (1-1/2")	19 mm (3/4")	HD - 2 Ply	6 mm Hose To Hose	6 mm Hose To Tool	NHC-1	NCG-1	NTC-1	NCG-2	NCP-1	10G x 1/2
ANH-1	RNW-2	10G x 1/2		25 mm (1")	LD - 2 Ply			NHC-1-25	NCG-1-25	NTC-1	NCG-2	NCP-1	10G x 1/2
NNH-1	RNW-25/ RNW-32	10G x 1/2		25 mm (1")	LD - 4 Ply			SHC-1	BCG-1	STC-1	BCG-1	BCP-1	10G x 1/2
ANH-1	RNW-2	10G x 1/2											
NNH-2	RNW-32	10G x 1/2	48 mm (1-7/8")	32 mm (1-1/4")	LD - 2 Ply	6 mm Hose To Hose	6 mm Hose To Tool	NHC-2	NCG-2	NTC-1	NCG-2	NCP-1	10G x 1/2
NNH-2	RNW-25	10G x 1/2		32 mm (1-1/4")	LD - 4 Ply			SHC-2	BCG-1	STC-1 or STC-2	BCG-1	BCP-1	10G x 1/2
ANH-2	RNW-2	10G x 1/2		25 mm (1")	HD - 2 Ply								
				25 mm (1")	HD - 4 Ply								
NNH-3	RNW-25/ RNW-32	10G x 1/2	55 mm (2-3/16")	38 mm (1-1/2")	LD - 2 Ply	6 mm Hose To Hose	6 mm Hose To Tool	NHC-3	NCG-2	NTC-1	NCG-2	NCP-1	10G x 1/2
				38 mm (1-1/2")	LD - 4 Ply			SHC-3	BCG-1	STC-1 or STC-2	BCG-1	BCP-1	10G x 1/2
ANH-3	N/A	10G x 1/2		32 mm (1-1/4")	HD - 2 Ply								
			32 mm (1-1/4")	HD - 4 Ply									
ANH-4	N/A	10G x 1/2	60 mm (2-3/8")	38 mm (1-1/2")	HD - 2 Ply	6 mm Hose To Hose	6 mm Hose To Tool	NHC-4	NCG-2	STC-2	BCG-1	NCP-1	10G x 1/2
				38 mm (1-1/2")	HD - 4 Ply								

7

COUPLINGS & NOZZLE HOLDERS

The PanBlast™ range of couplings and nozzle holders are manufactured from a variety of materials to suit different application requirements. The lightweight, durable and precision fit nylon series is ideal for general blasting applications. For harsh operating environments or heavy hose dragging applications, zinc plated steel couplings in conjunction with aluminum nozzle holders will ensure extended durability.



CAT-1301-03 Page 370 to 371



- Lightweight
- Excellent sealing & precise coupling

NYLON COUPLINGS



CAT-1302-01 Page 372 to 373



- Rugged & heavy duty
- Zinc plated for corrosion resistance

STEEL COUPLINGS



CAT-1301-04 Page 378 to 379



- For blast hose sealing against coupling
- Manufactured from virgin natural rubber

COUPLING GASKETS



CAT-1301-04 Page 378 to 379



- Ensures coupling safety
- Manufactured from spring steel

LOCKING PINS



CAT-1301-01 Page 368 to 369



- Lightweight
- Excellent sealing
- Contractor coarse thread prevents freezing

NYLON NOZZLE HOLDERS



CAT-1303-01 Page 374 to 375

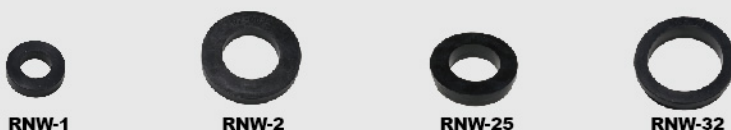


- Heavy duty
- Contractor coarse thread prevents freezing

ALUMINUM NOZZLE HOLDERS



CAT-1301-02 Page 376 to 377



- For nozzle sealing against holder
- Manufactured from virgin natural rubber

NOZZLE WASHERS

8

BLAST POT ACCESSORIES

The PanBlast™ range of blast pot accessories may be used for both generic and PanBlast™ pressure blast pots. Each quality component contributes to proper equipment functioning, durability, and operational safety of pressure blast pots.



CAT-0403-01 Page 382 to 383



- 19 mm (3/4") barb fitting connects to most remote exhaust valves
- Discharge noise reduction of up to 70%

EXHAUST MUFFLER



CAT-0403-01 Page 382 to 383

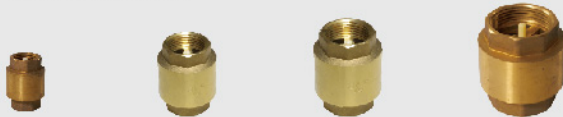


- Safety relief valves for pressurized systems
- 100% tested for relief pressure
- 8.7 Bar (125 psi) & 10.4 Bar (150 psi) versions

PRESSURE RELIEF VALVES



CAT-0403-01 Page 382 to 383



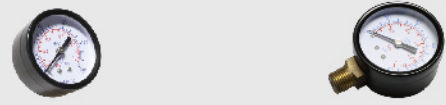
13 mm (1/2") 19 mm (3/4") 25 mm (1") 32 mm (1-1/4")

- Prevents abrasive blow back to extend service life of remote control valve
- 15 Bar (217 psi) pressure rating

NON RETURN VALVES



CAT-0403-01 Page 382 to 383



6 mm (1/4") Rear Entry 6 mm (1/4") Base Entry

- Displays compressed air supply pressure
- Horizontal & vertical configurations
- Compact & economical

PRESSURE GAUGES



CAT-0403-01 Page 382 to 383



6 mm (1/4") 10 mm (3/8") 13 mm (1/2") 19 mm (3/4") 25 mm (1") 32 mm (1-1/4") 38 mm (1-1/2")

- Full bore construction for maximum flow rate
- Constructed from corrosion resistant brass

BALL VALVES



CAT-0403-05-00 Page 386 to 387



610 mm (24") Φ Screen



510 mm (20") Φ Screen



410 mm (16") Φ Screen



305 mm (12") Φ Screen



250 mm (10") Φ Screen



610 mm (24") Φ Lid



510 mm (20") Φ Lid



410 mm (16") Φ Lid



305 mm (12") Φ Lid



250 mm (10") Φ Lid

- Screen prevents entry of particles larger than 6 mm (1/4") into blast pot
- Lid prevents entry of moisture and foreign objects into blast pot

POT SCREENS & LIDS



- Constructed from polyurethane or virgin rubber for excellent sealing
- Various styles available to suit blast pot internal plumbing layout

CAT-0403-02 Page 384 to 385



Junior Pop Up Valve



Pop up Valve - Sleeve Type



Pop up Valve - Stem Type



P/U Dome Pop Up Valve



P&G Pop Up Valve



Junior Seating Ring



Pop up Valve Seating Ring



P/U Dome Pop Up Valve - Seating Ring



P&G High Volume Pop Up Valve

POP UP VALVES AND SEATING RINGS



- Commercial fittings to ensure adequate air volume and minimal pressure loss
- Available in various styles to suit equipment configuration

CAT-0403-06 Page 388 to 389



50 mm (2") Spud Wing Nut



50 mm (2") BSP Male Spud



50 mm (2") BSP Female Spud



50 mm (2") Tail Fitting Spud



50 mm (2") Double Fitting Spud

SPUD FITTINGS



CAT-0403-06 Page 388 to 389



13 mm (1/2")	Per/m
19 mm (3/4")	Per/m
25 mm (1")	Per/m
32 mm (1-1/4")	Per/m
38 mm (1-1/2")	Per/m
50 mm (2")	Per/m

- Commercial air supply hose to ensure adequate air volume with minimal pressure loss to equipment
- Available in various sizes to suit equipment requirements

COMPRESSED AIR HOSES



CAT-0403-06 Page 388 to 389



Double Bolt

13 mm (1/2")
19 mm (3/4")
25 mm (1")
32 mm (1-1/4")



Four Bolt

38 mm (1-1/2")
50 mm (2")

- Commercial clamps to ensure secure coupling of compressed air lines to equipment
- Available in various sizes to suit equipment requirements

HOSE CLAMPS



CAT-0403-06 Page 388 to 389



Female Claw Coupling



Male Claw Coupling



Claw Coupling Tail



Female Coupling



Male Coupling



Hose End

13 mm (1/2") BSP
19 mm (3/4") BSP
25 mm (1") BSP
32 mm (1-1/4") BSP

13 mm (1/2") BSP
19 mm (3/4") BSP
25 mm (1") BSP
32 mm (1-1/4") BSP

13 mm (1/2")
19 mm (3/4")
25 mm (1")
32 mm (1-1/4")

38 mm (1-1/2") BSP
50 mm (2") BSP

38 mm (1-1/2") BSP
50 mm (2") BSP

38 mm (1-1/2")
50 mm (2")

- Commercial fittings for coupling of compressed air lines to equipment
- Available in various sizes to suit equipment requirements

HOSE COUPLINGS

9

OPERATOR PROTECTION

The PanBlast™ range of personal protection equipment is specifically designed for use during blast cleaning operations to provide safety and comfort to the operator performing this arduous activity.



CAT-1601-01 Page 392 to 395

- Impact resistant lightweight black ABS outer shell
- Comfort head and cheek padding with air flow indicator
- Multi-directional AcoustiFlex sound deadening breathing tube
- Supplied inner lens complies with EN166:2001 Table 7; Class B and conforms to AS1337 - V Grade Impact Resistance
- Certifications:
European CE: EN14594:2018 Class 4B
Australia and New Zealand: AS/NZS 1716:2012



Standard Cape

Leather Cape

- ✓ Air Cooling Controller
- ✓ Air Flow Controller
- ✓ Climate Controller

TITAN II SAR



CAT-1601-02 Page 396 to 399

- Rigid, safety red lightweight polyethylene outer shell
- Front flow air dispersion system with air flow indicator
- Multi-directional AcoustiFlex sound deadening breathing tube
- Supplied inner lens complies with EN166:2001 Table 7; Class B and conforms to AS1337 - V Grade Impact Resistance
- Certifications:
Australia and New Zealand: AS/NZS 1716:2012



- ✓ Air Cooling Controller
- ✓ Air Flow Controller
- ✓ Climate Controller

COSMO SAR



CAT-1603-01 Page 412 to 415

- ✓ Air Flow Controller

- Economical lightweight polyethylene outer shell
- Front flow air dispersion system
- Comfort padding for neck padding
- To be used in conjunction with industrial safety goggles and ear plugs



SPARTAN SAR



CAT-1603-02 Page 416 to 419

- ✓ Air Cooling Controller
- ✓ Air Flow Controller
- ✓ Climate Controller

- Rigid, safety red lightweight polyethylene outer shell
- Front flow air dispersion system with air flow indicator
- Bright safety yellow high visibility cape
- To be used in conjunction with industrial safety goggles and ear plugs



GALAXY SAR



CAT-1602-01 Page 400 to 401



- Reduces air temperature by up to 66°F (19°C)
- No batteries or external power required
- Static vortex cooling - no moving parts
- Certifications:
European CE: EN14594: 2018 Class 4B
Australia and New Zealand: AS/NZS 1716:2012

AIR COOLING CONTROLLER



CAT-1602-02 Page 404 to 407



- Simple and durable flow controller design
- No batteries or external power required
- Certifications:
European CE: EN14594: 2018 Class 4B
Australia and New Zealand: AS/NZS 1716:2012

AIR FLOW CONTROLLER



CAT-1602-03 Page 408 to 411



- Decreases air temperature by up to 59°F (15°C)
- Increases air temperature by up to 86°F (30°C)
- Sliding lever switches from cooling to heating
- No batteries or external power required
- Static vortex operation - no moving parts
- Certifications:
European CE: EN14594: 2018 Class 4B
Australia and New Zealand: AS/NZS 1716:2012

CLIMATE CONTROLLER



CAT-1604-01 Page 420 to 421

- 20+ hours of operation at 1000-1300 lux per charge
- 3.7 V rechargeable lithium ion battery included
- Maintenance-free LED lamp with no heat generation
- Steel strap and bracket for mounting to most blast helmets currently in the market
- Replaceable glass lens



AURORA LED HELMET LIGHT

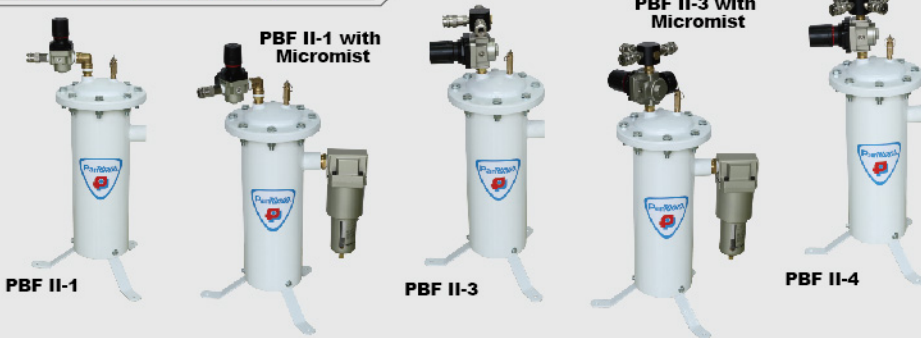
10

RESPIRATOR AIRLINE FILTERS

The PanBlast™ range of respirator airline filters may be used in conjunction with either generic or PanBlast™ respirator blast helmets. Each respirator airline filter removes moisture and odors from the supplied breathing air to enhance operator comfort during use.



CAT-1702-01 Page 434 to 437



- Incorporates pressure regulator and gauge, pressure relief and drain valves
- Available in single and multi-operator configurations
- CE marked under PED 97/23/EC
- Optional micro mist filter further removes oil mist and sub-micron particulates from the breathing air for AS/NZS1715 compliance

PBF II FILTERS



CAT-1701-01 Page 430 to 433

- Incorporates pressure regulator and gauge, safety relief and drain valves
- Freestanding rugged design with carry handle
- CE marked under PED 97/23/EC



PBF II JUNIOR FILTER



CAT-1704-01 Page 446 to 447

- Removes moisture & odour from breathing air
- Economical with 3-stage filtration
- Fits industry standard "insertion cartridge" respirator airline filters
- Also fits "flanged cartridge" respirator airline filters via flange adapter kit



AIRLINE FILTER CARTRIDGE



CAT-1605-01 Page 426 to 427

- Detects carbon monoxide (CO) in breathing air
- Integral visual and audible alarm with flow and status indicators
- Multi-voltage operation (240/120 VAC and 12 VDC)
- Portable & rugged case
- Optional remote alarm system, with strobe, siren and 20 m (66 ft) cable



Mobile CO Monitor



Mobile Remote Alarm

AIRLINE CO MONITOR



CAT-1703-01 Page 438 to 441

- Incorporates pressure regulator and gauge, safety relief and drain valves
- Available in single and multi-operator configurations
- CE marked under PED 97/23/EC Category I, PS*DN<3000 with 150 psi (1035 kPa) working pressure
- Can be used in horizontally, vertically, wall mounted or free standing
- Optional CO monitoring system mounted directly on filter body



VisiFlo-S



VisiFlo-S with CO Monitor

VISIFLO-S FILTERS



CAT-1703-02 Page 442 to 445

- Clear, virtually indestructible housing tube for visual inspection of filter interior
- Incorporates pressure regulator and gauge, safety relief and drain valves
- Available in single and multi-operator configurations
- CE marked under PED 97/23/EC Category I, PS*DN<3000 150 psi (1035 kPa) working pressure
- Can be used in horizontally, vertically, wall mounted or free standing
- Optional CO monitoring system mounted directly on filter body



VisiFlo-P



VisiFlo-P with CO Monitor

VISIFLO-P FILTERS

11

COMPRESSED AIR PREPARATION

The PanBlast™ range of compressed air preparation equipment includes pressure regulators, moisture separators and after coolers. Clean and dry compressed air supplied at the appropriate pressure is required to ensure a high quality blast stream with minimal clogging or clumping, of abrasive media.



CAT-0501-01 Page 450 to 451



9.5mm (3/8")
Moisture Separator



13mm (1/2")
Moisture Separator



19mm (3/4")
Moisture Separator



25mm (1")
Moisture Separator



32mm (1-1/4")
Moisture Separator



38mm (1-1/2")
Moisture Separator

- Removes moisture from compressed air supply
- Economical with water drain feature
- Replaceable filter element



13mm (1/2")
Filter Element



19mm (3/4")
Filter Element



32mm (1-1/4") & 38mm (1-1/2")
Filter Element

MOISTURE SEPARATORS



CAT-0503-01 Page 452 to 453



6mm (1/4")
Pressure Regulator



9.5mm (3/8")
Pressure Regulator



13mm (1/2")
Pressure Regulator



19mm (3/4")
Pressure Regulator



25mm (1")
Pressure Regulator

- Regulates compressed air supply pressure
- Pressure adjusting knob
- Lightweight & economical



6mm (1/4")
Filter Regulator



9.5mm 3/8"
Filter Regulator



13mm (1/2")
Filter Regulator

PRESSURE REGULATORS



CAT-0505-01 Page 454 to 455



ACC-250
After Cooler



ACC-400
After Cooler



ACC-750
After Cooler



ACC-950
After Cooler

- Significantly less downtime, breakdown and repairs
- Effectively removes moisture from compressed air
- Dry air provides smooth and continuous abrasive media flow

AFTER COOLERS

12

PIPE BLASTING TOOLS

The PanBlast™ range of pipe blasting tools can be used for internal pipe diameters ranging from 19 mm (3/4") to 1525 mm (60"). These tools are suitable for onsite blasting and have matching transport carriages to suit various pipe diameters. They are durable, non-jamming and have low maintenance requirements for maximum productivity.



CAT-1001-01 Page 460 to 463

- Concentrated 360° blast pattern with tungsten carbide internal throat components
- Built in tungsten venturi nozzle system for maximum abrasive acceleration
- For internal pipe diameters: 19 mm (3/4") to 50 mm (2")



ConeBlast 1/4 Internal Pipe Blaster

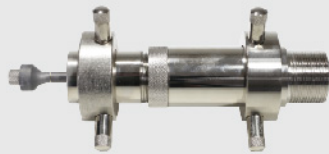
CONEBLAST 1/4



CAT-1002-01 Page 464 to 467



ConeBlast 1/2 Less Carriage



ConeBlast 1/2 Internal Pipe Blaster



ConeBlast 1/2 Centering Carriage



ConeBlast 1/2 with Carriage

- Wide 360° deflection blasting process with choice of tungsten or long life boron tips
- High chrome machined exterior with long life wear resistant tungsten internal components
- For internal pipe diameters: 50 mm (2") to 300 mm (12")

CONEBLAST 1/2



CAT-1003-01 Page 468 to 471

- Revolutionary non-jamming venturi injector rotary seal for ultimate production uptime
- Ultra premium build quality with choice of standard or extended life blast nozzles
- For internal pipe diameters: 200 mm (8") to 1525 mm (60")



Tornado Internal Pipe Blasting Tool Set

Tornado Tool Carriages CAT-1004-01 Page 472 to 473



Tornado Large Range Carriage Set



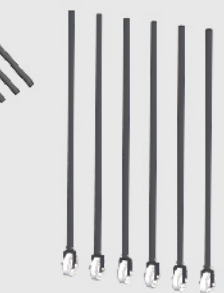
Tornado Small Range Scissor Carriage



Tornado Mid Range Carriage Set



Tornado Mid Range Legs Set



Tornado Large Range Legs Set

TORNADO

13

CLOSED CIRCUIT BLASTERS

PanBlast™ Closed Circuit Blasters are portable dust free blasting units operated by compressed air; and are available in compact light-duty suction blast and heavy-duty pressure blast variants. Both systems are suited for touch up blasting, weld seam blasting, roll repair / etching and plant maintenance.



CAT-0801-01 Page 476 to 479

- Lightweight, compact and portable
- Continuous cycle blast & vacuum in single process
- Compressed air driven venturi vacuum Suitable for most abrasive media types



**AER85 Light Duty
Closed Circuit Blaster**



LIGHT DUTY



CAT-0802-01 Page 480 to 483

- Ergonomic "Hands-Free" lightweight handle operation
- Multi-pass ultra high efficiency cyclonic separator
- Fully adjustable abrasive reclaimer for all media types
- Pressure-hold Corsa II abrasive metering valve
- Cartridge dust collector with reverse pulse jet cleaning
- Long life boron carbide venturi blast nozzle



**AER215 Nuovo
Closed Circuit Blaster**



HEAVY DUTY

14

ABRASIVE RECYCLING SYSTEMS

PanBlast™ Abrasive Recycling Systems are designed for use with single or dual pressure blast pots. Cleaning of abrasives ensures maximum blasting productivity with less airborne dust released, and less wear and tear on associated components while achieving consistency in surface standard cleanliness and profiles.



- Lightweight, compact and portable
- Compressed air driven via twin venturi ejectors
- 10 m (33 ft) vacuum hose with abrasive pick up wand
- Vacuum recovery capacity of 1,000 kg (2,200 lbs) per hour



Pow Air Vac Assembly
CAT-0901-01
Page 486 to 489



Extended Pow Air Vac Assembly
CAT-0901-02
Page 490 to 493

LOW VOLUME



- Fully adjustable abrasive air wash system for all media types
- Media recycling rate of 3,000 kg (6,600 lbs) per hour
- Single cartridge reverse pulse jet dust collector
- Single-phase electrical power
- Suited for use with a single 200 liter (6 ft³) blast pot
- Optional height extensions and storage hoppers
- Adaptable for use as a blast room sweep in recovery system
- Optional magnetic separation for the removal of metallic debris from recycled abrasive media



ProFlo Abrasive Recycling System
CAT-0902-01
Page 494 to 497



Extended ProFlo Recycling System
CAT-0902-02
Page 498 to 501



Extended ProFlo System with Rotary Magnetic Separation
CAT-0902-03
Page 502 to 505

MEDIUM VOLUME



- Fully adjustable abrasive air wash system for all media types
- Media recycling rate of 7,000 kg (15,400 lbs) per hour
- Twin cartridge reverse pulse jet dust collector
- Three-phase electrical power
- Suited for use with dual 200 liter (6 ft³) blast pots
- Optional height extensions and storage hoppers
- Adaptable for use as a blast room sweep in recovery system
- Optional magnetic separation for the removal of metallic debris from recycled abrasive media

UltraFlo Abrasive Recycling System
CAT-0903-01
Page 506 to 509



UltraFlo Extended Recycling System
CAT-0903-02
Page 510 to 513



HIGH VOLUME

BLAST CABINETS

Selection of the appropriate blast cabinet size includes consideration for frequency of use, product mix, surface finish and size of products to be blasted. Both light and heavy-duty cabinets are available in multiple electrical supply options.



- Light duty
- Knocked down assembly
- Hobbyist entry-level model



CS34 Blast Cabinet - 110/230VAC
CAT-0601-01
Page 516 to 519

- Medium duty
- Sturdy
- Intermittent shop use entry-level model



CS37 Blast Cabinet - 110/230VAC
CAT-0601-02
Page 520 to 523

- Medium duty
- Three door access
- Intermittent shop use model



CS48 Blast Cabinet - 110/230VAC
CAT-0601-03
Page 524 to 527

- Industrial-grade robust structure
- Sock-type dust collector
- Medium-duty applications



PB500ES Blast Cabinet Assembly
CAT-0601-04
Page 528 to 531

- Industrial-grade robust structure
- Pulse cartridge dust collector
- Medium-duty applications



PB500SP Blast Cabinet Assembly
CAT-0601-05
Page 532 to 535



PB1000SP Blast Cabinet Assembly
CAT-0601-07
Page 536 to 539

Light and medium duty suction blast cabinet variants include CS34, CS37, CS48, PB500 and PB1000 sizes. These models are economical and work best with lightweight recyclable abrasive media.

LIGHT DUTY



- Industrial-grade robust structure
- Pulse cartridge dust collector
- Low/high pressure blast capable
- Suitable for production line use
- Cyclonic cleaning



PB1000PMB Blast Cabinet Assembly
CAT-0604-01
Page 572 to 575



PB1500PMB/AU Pressure Cabinet Assembly
CAT-0604-02
Page 576 to 579

Pressure media cabinet variants include PB1000 and PB1500 sizes. Both models feature steep angle cone, precision flow control valve, optional low-pressure dump valve for low pressure blasting to 35kPa (5psi) and are ideal for applications featuring delicate parts.

PLASTIC MEDIA BLAST



PB500HD Blast Cabinet Assembly
CAT-0602-01
Page 540 to 543

- Industrial-grade robust structure
- Pulse cartridge dust collector
- Cyclonic cleaning
- Suitable for production line use



PB1000HD Blast Cabinet Assembly
CAT-0602-02
Page 544 to 547



PB1500HD Blast Cabinet Assembly
CAT-0602-03
Page 548 to 551

- Dual station industrial-grade robust structure
- Cyclonic cleaning
- Pulse cartridge dust collector
- Suitable for production line use with extended length parts



PB2000HD Blast Cabinet Assembly
CAT-0602-04
Page 552 to 555

Heavy-duty suction blast cabinet variants include PB500, PB1000, PB1500 and PB2000 sizes. These models work best with lightweight recyclable abrasive media and feature excellent media cleaning.

HEAVY DUTY



PB500P Blast Cabinet Assembly
CAT-0603-01
Page 556 to 559

- Industrial-grade robust structure
- High impact blasting
- Cyclonic cleaning
- Pulse cartridge dust collector
- Suitable for production line use



PB1000P/AU/NZ/SG Pressure Cabinet Assembly
CAT-0603-02
Page 560 to 563



PB1500P/AU/NZ/SG Pressure Cabinet Assembly
CAT-0603-03
Page 564 to 567

- Dual Station industrial-grade robust structure
- High impact blasting
- Cyclonic cleaning
- Pulse cartridge dust collector
- Suitable for production line use with extended length parts



PB2000P Blast Cabinet Assembly
CAT-0603-04
Page 568 to 571

Pressure blast cabinet variants include PB500, PB1000, PB1500 and PB2000 sizes. These models work with all recyclable abrasive media, feature excellent media cleaning and are ideal for applications requiring surface profiles.

PRESSURE BLAST

BLAST CABINET PARTS

The PanBlast™ range of blast cabinet parts consists of a variety of suction blast guns and cartridge filters that can be used in both PanBlast™ blast cabinets and generic third-party blast cabinets, in both manual and automatic configurations.



CAT-1201-07 Page 582 to 583



CS48 Gun Assembly

- Ergonomic unibody design ideal for manual cabinets
- Economical ceramic nozzles supplied standard

GENERIC



CAT-1201-01 Page 584 to 587



Delta-M CS
1/8 x 1/4



Delta-M GDF
3/32 x 1/4



Delta-M GDF
1/8 x 1/4



Delta-M GDF
3/16 x 3/8

- Ergonomic, lightweight design for reduced operator fatigue
- Hardened steel air tip for longer service life
- Aluminum jacketed, tungsten carbide nozzles
- Mounting lug for manual gun stand attachment

DELTA GDF MANUAL



CAT-1201-02 Page 588 to 591



Delta-A CS
1/8 x 1/4



Delta-A GDF
3/32 x 1/4



Delta-A GDF
1/8 x 1/4



Delta-A GDF
3/16 x 3/8

- Ergonomic, lightweight design for more efficient mounting and manipulation
- Case hardened steel air tip for longer service life
- Aluminum jacketed, tungsten carbide blast nozzles
- Mounting lug for quick attachment to bracket and/or manipulator
- Optional hardened heavy-duty air tip available

DELTA GDF AUTO



CAT-1201-03 Page 592 to 595



Delta-M
5 mm Boron Nozzle



Delta-M
6 mm Boron Nozzle



Delta-M
8 mm Boron Nozzle



Delta-M
9 mm Boron Nozzle



Delta-M SNH
3/32 x 3/16



Delta-M SNH
1/8 x 1/4



Delta-M SNH
3/16 x 11/32

- Ergonomic, lightweight design for reduced operator fatigue
- Hardened steel air tip for longer service life
- Available with either boron carbide or ceramic blast nozzle
- Mounting lug for gun stand attachment

DELTA SNH MANUAL



CAT-1201-04 Page 596 to 599



Delta-A
5 mm Boron Nozzle



Delta-A
6 mm Boron Nozzle



Delta-A
8 mm Boron Nozzle



Delta-A
9 mm Boron Nozzle



Delta-A SNH
3/32 x 1/4



Delta-A SNH
1/8 x 1/4



Delta-A SNH
3/16 x 11/32

- Ergonomic, lightweight design for more efficient mounting and manipulation
- Case hardened steel air tip for longer service life
- Optional hardened heavy-duty air tip available
- Available with either boron carbide or ceramic blast nozzles
- Mounting lug for quick, simple attachment to bracket and/or manipulator

DELTA SNH AUTO



CAT-1201-05 Page 600 to 603



Godfrey
3/32 x 3/16



Godfrey
1/16 x 3/16



Godfrey
1/8 x 1/4



Godfrey
3/16 x 3/8



Godfrey
1/4 x 1/2



Godfrey
1/8 x 3/8

- Conventional heavy-duty design ideal for manual cabinets
- Long life nozzle injector tips and tungsten nozzles to suit application

GODFREY SUCTION



CAT-1201-06 Page 604 to 607



Omega
6 mm Boron Nozzle



Omega
9 mm Boron Nozzle



Omega
6.4 mm Ceramic Nozzle



Omega
7.9 mm Ceramic Nozzle



Omega
9.5 mm Ceramic Nozzle

- Economical ceramic nozzles supplied standard
- For use in both manual and automated blast cabinets
- Optional ultra long life boron carbide nozzles

OMEGA SUCTION



CAT-1202-01 Page 608 to 609



Size 1
(Open/Close)



Size 2
(Open/Close)



Size 2
(Open/Open)



Size 3
(Open/Close)



Size 4
(Open/Open)



Size 5
(Open/Open)



Size 6
(Open/Close)



Size 7
(Open/Open)



Size 7
(Open/Close)

- Durable double pleated cellulose/polyester media
- MERV13 filtration efficiency
- Either bands or metal cages to keep fabric media intact during pulse cleaning
- Rubber gasket sealing for open ends
- Custom sizes and design upon request

FILTER CARTRIDGES

17

AIRLESS PAINTING SYSTEMS

PanBlast™ Airless Spray Pumps are available in several standard sizes to suit different application requirements and coating specifications. All pump sizes share two standard gun styles and multiple spray tips.



- Portable design and rugged frame
- Pump ratios of 30:1, 45:1, 63:1, 68:1 and 73:1

CAT-1101-01 Page 612 to 613



**30:1
Airless Spray Pump**



**45:1
Airless Spray Pump**



**63:1
Airless Spray Pump**



**68:1
Airless Spray Pump**



**73:1
Airless Spray Pump**

STANDARD PUMPS



- HP Spray Gun for use with low and medium viscosity coatings up to 500 bar (7,250 psi)
- Four Finger Spray Gun for use with medium and high viscosity coatings up to 700 bar (10,150 psi)

CAT-1101-01 Page 612 to 613



HP Spray Gun



4 Finger Blue Gun

SPRAY GUNS



- Top quality high-pressure air and paint supply hoses for use with Airless Spray Pumps

CAT-1101-01 Page 612 to 613



**1/4" X 2 M
Paint Hose
Whip Line 430 Bar**



**3/8" X 15 M
Airless Paint Hose
Whip Line 430 Bar**



**1/4" X 15 M
Airless Paint Hose**



**3/8" X 15 M
Airless Paint Hose**

AIRLESS HOSES



CAT-1101-01 Page 612 to 613



**Contractor
Flat Tip Range**



**Standard
Flat Tip Range**



**RAC X Switch
Tip Range**



**RAC 5 Switch
Tip Range**



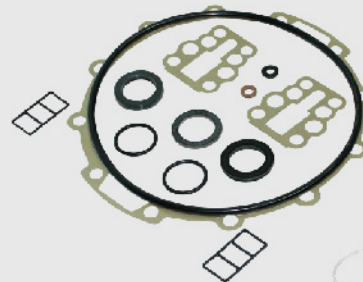
**XHD Switch
Tip Range**

- Standard flat tips or RAC switch tips

SPRAY TIPS



CAT-1101-01 Page 612 to 613



Air Motor Repair Kit



**Displacement
Pump Repair Kit**

- For easy plug-and-play replacement of common wear items

SERVICE KITS

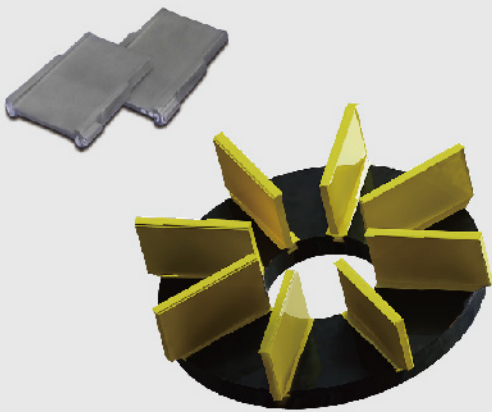
18

BLAST WHEEL PARTS

PanBlast™ Blast Wheel Parts are manufactured using chrome molybdenum alloy via both lost wax investment casting and conventional sand casting processes, with the former providing a superior surface finish and enhanced durability. The parts are then heat treated to achieve surface hardness of up to 65 HRC.



CAT-1801-01 Page 616 to 617

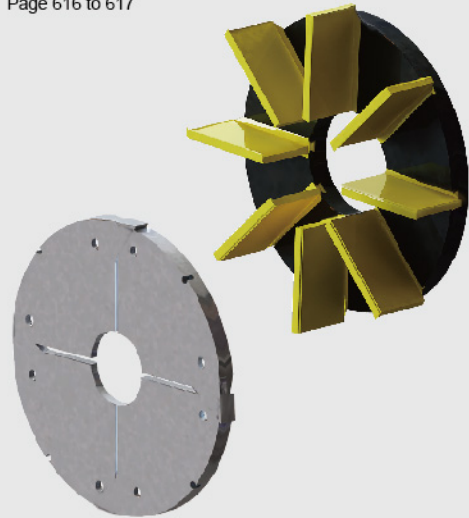


- Plug and play retrofit of parts to existing equipment
- High quality, low porosity castings with excellent surface finish
- Extended parts durability from heat-treated alloy

VANES



CAT-1801-01 Page 616 to 617



- Plug and play retrofit of parts to existing equipment
- High quality, low porosity castings with excellent surface finish
- Extended parts durability from heat-treated alloy

IMPELLERS



CAT-1801-01 Page 616 to 617

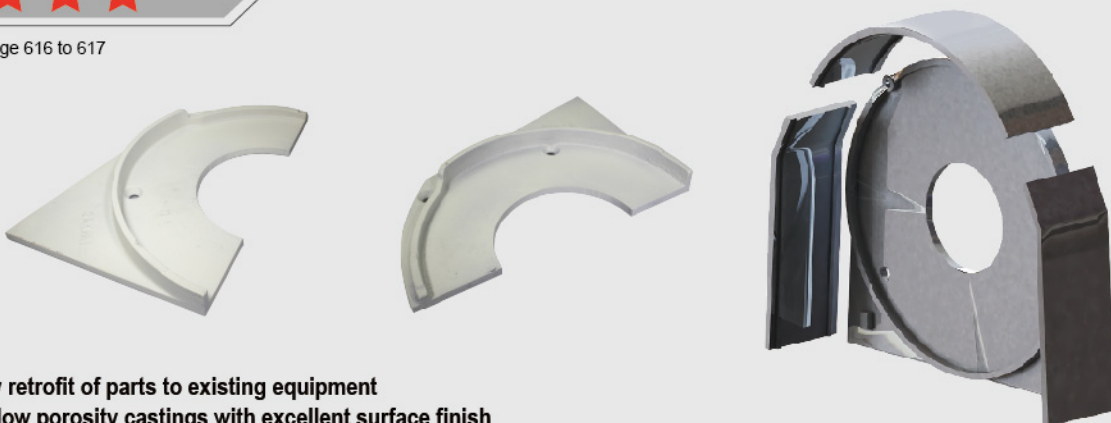


- Plug and play retrofit of parts to existing equipment
- High quality, low porosity castings with excellent surface finish
- Extended parts durability from heat-treated alloy

CONTROL CAGES



CAT-1801-01 Page 616 to 617



- Plug and play retrofit of parts to existing equipment
- High quality, low porosity castings with excellent surface finish
- Extended parts durability from heat-treated alloy

LINERS





DISTRIBUTOR: