


Blast Pots

- Automatic
- Manual
- Specialty
- Bulk



BP110-1 Blast Pots





Product Features

PanBlast™ BP Series Blast Pots are available in multiple configurations and specifications to suit varying market requirements worldwide. The BP110-1 is a medium-capacity, automatic blast pot, suitable for touch-up blasting and small-scale operations.

- ▶ Designed and manufactured in accordance with international standards and requirements.
- ▶ Third party pressure vessel certification available on request.
- ▶ UniFlo combination type remote control valve.
- ▶ AirFlo air-bleed type pneumatic deadman handle.
- ▶ Junior Plana type abrasive control valve with cast aluminium construction.
- ▶ Moisture trap, exhaust muffler and main air isolation valve standard.
- ▶ 31 litres (1.1 ft³) abrasive capacity, 125 or 150 psi pressure rating.
- ▶ 19 mm (3/4") fittings.

Common Applications

- ▶ On site industrial and commercial blasting.
- ▶ Blast and painting contractor yard work.
- ▶ Blast room applications with or without abrasive recovery systems.
- ▶ In situ blasting in shipyards and slipways.

Complementary Products



Blast Hoses



Cosmo SAR



Couplings & Nozzle Holders



Whip Check Cables



ATN-S Blast Nozzles



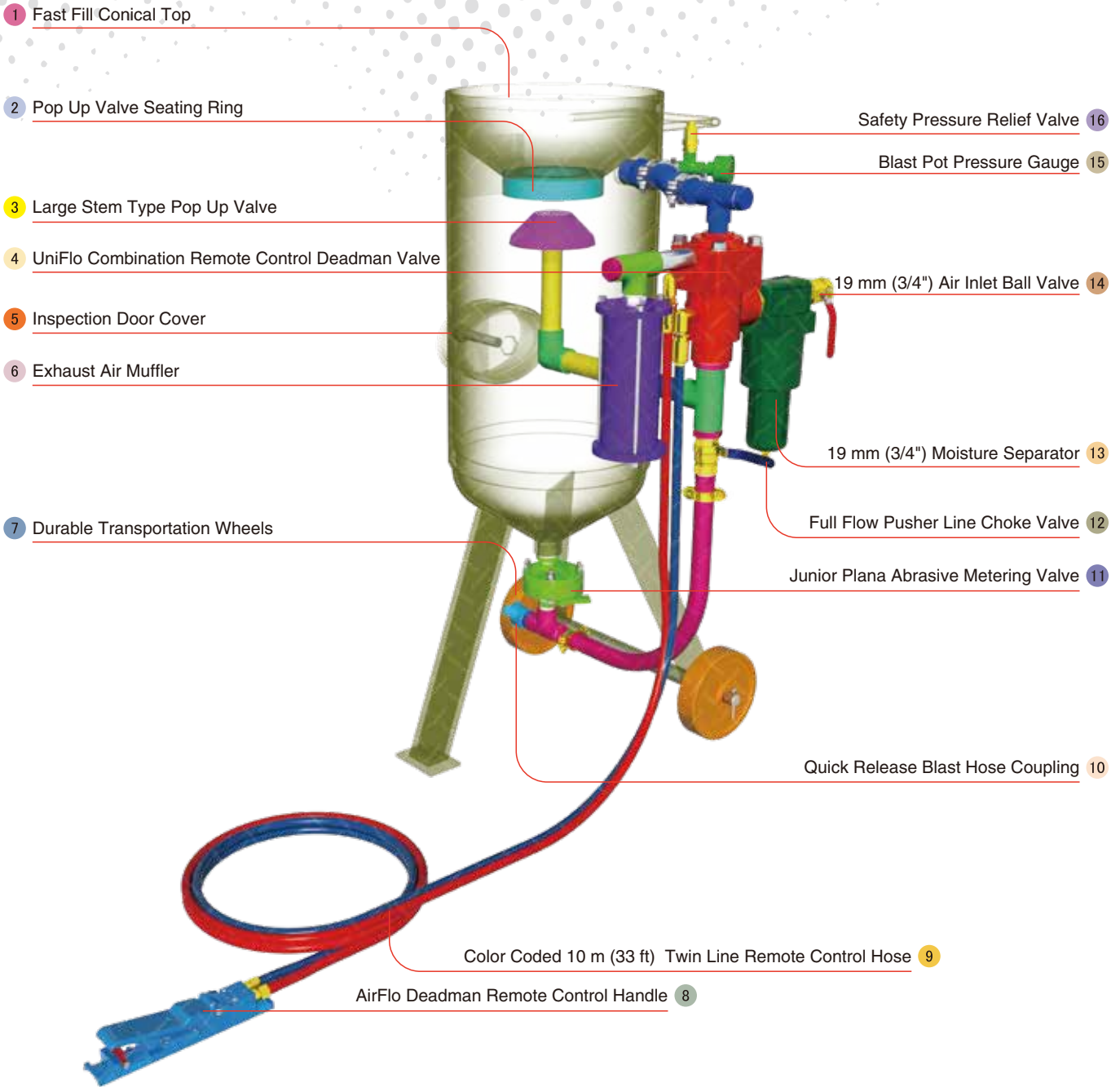
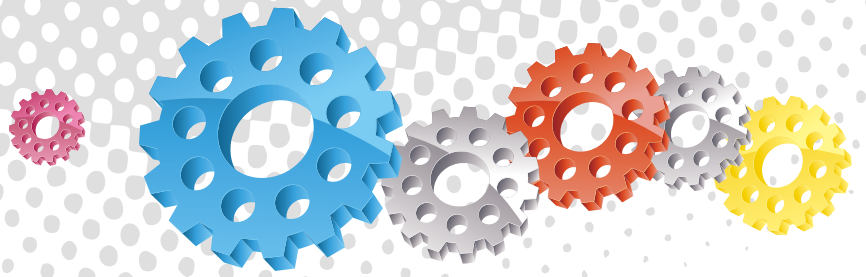
VisiFlo Standard Airline Filter



Electric Remote Systems



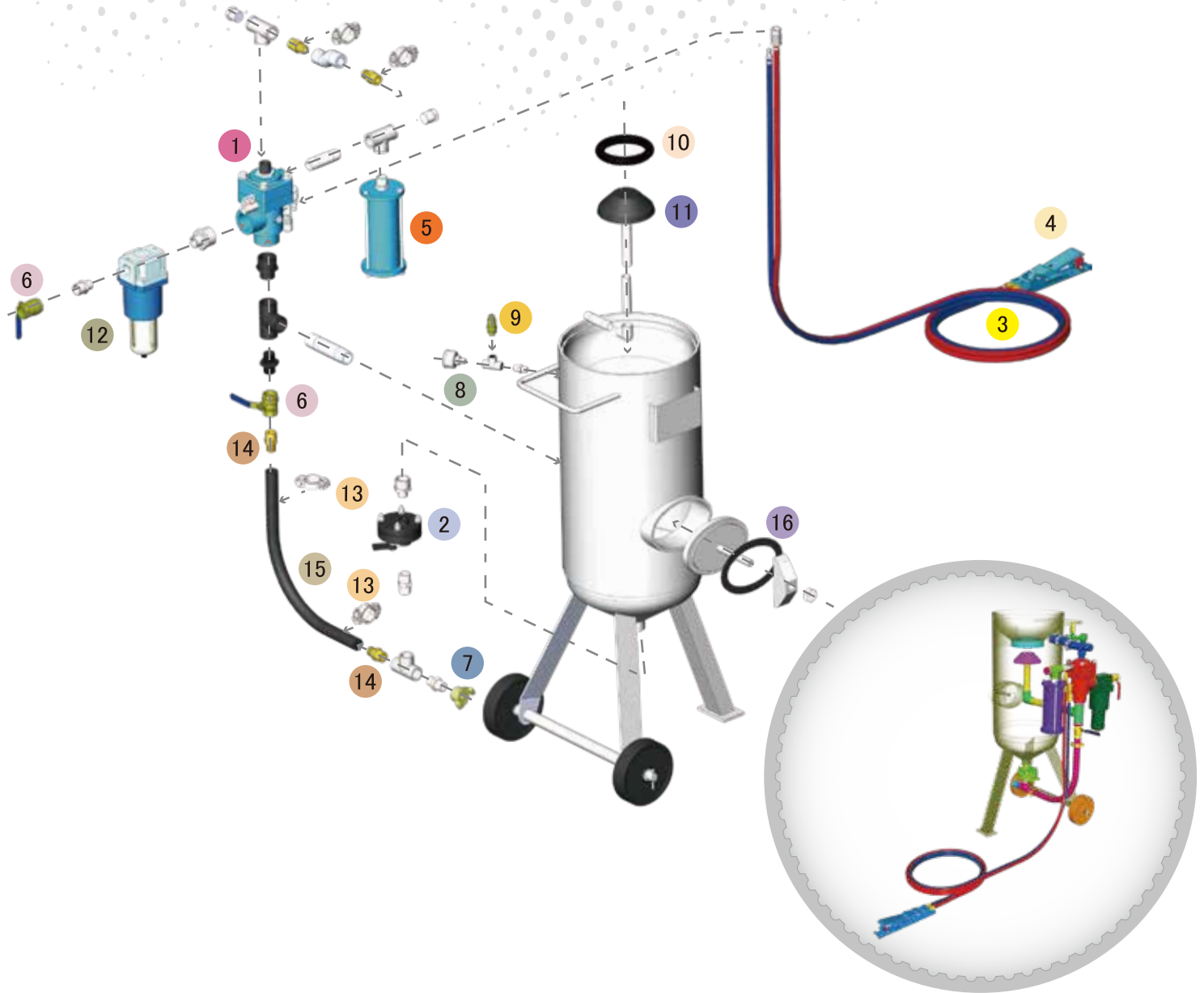
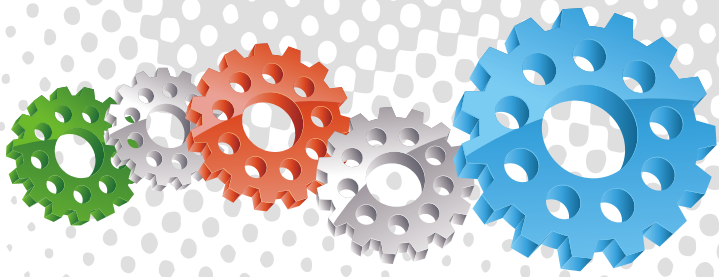
Blasting Suit & Gloves



Component Highlights



- | | | |
|---|--|--------------------------------------|
| 1 Fast Fill Conical Top | 7 Durable Transportation Wheels | 13 19 mm (3/4") Moisture Separator |
| 2 Pop Up Valve Seating Ring | 8 AirFlo Deadman Remote Control Handle | 14 19 mm (3/4") Air Inlet Ball Valve |
| 3 Large Stem Type Pop Up Valve | 9 Color Coded 10 m (33 ft) Twin Line Remote Control Hose | 15 Blast Pot Pressure Gauge |
| 4 UniFlo Combination Remote Control Deadman Valve | 10 Quick Release Blast Hose Coupling | 16 Safety Pressure Relief Valve |
| 5 Inspection Door Cover | 11 Junior Plana Abrasive Metering Valve | |
| 6 Exhaust Air Muffler | 12 Full Flow Pusher Line Choke Valve | |



Assemblies

Stock Code	Description	Dry Weight	Abrasive Capacity
BEP-PS-0065-00	BP110-1/SG UniFlo J/Plana AirFlo	90 kg (200 lbs)	31 litres (1.1 ft ³)
BEP-PS-0074-00	BP110-1/AU/MY/NZ UniFlo J/Plana AirFlo	90 kg (200 lbs)	31 litres (1.1 ft ³)

Notation:

AU: Approved by Worksafe, Australia.

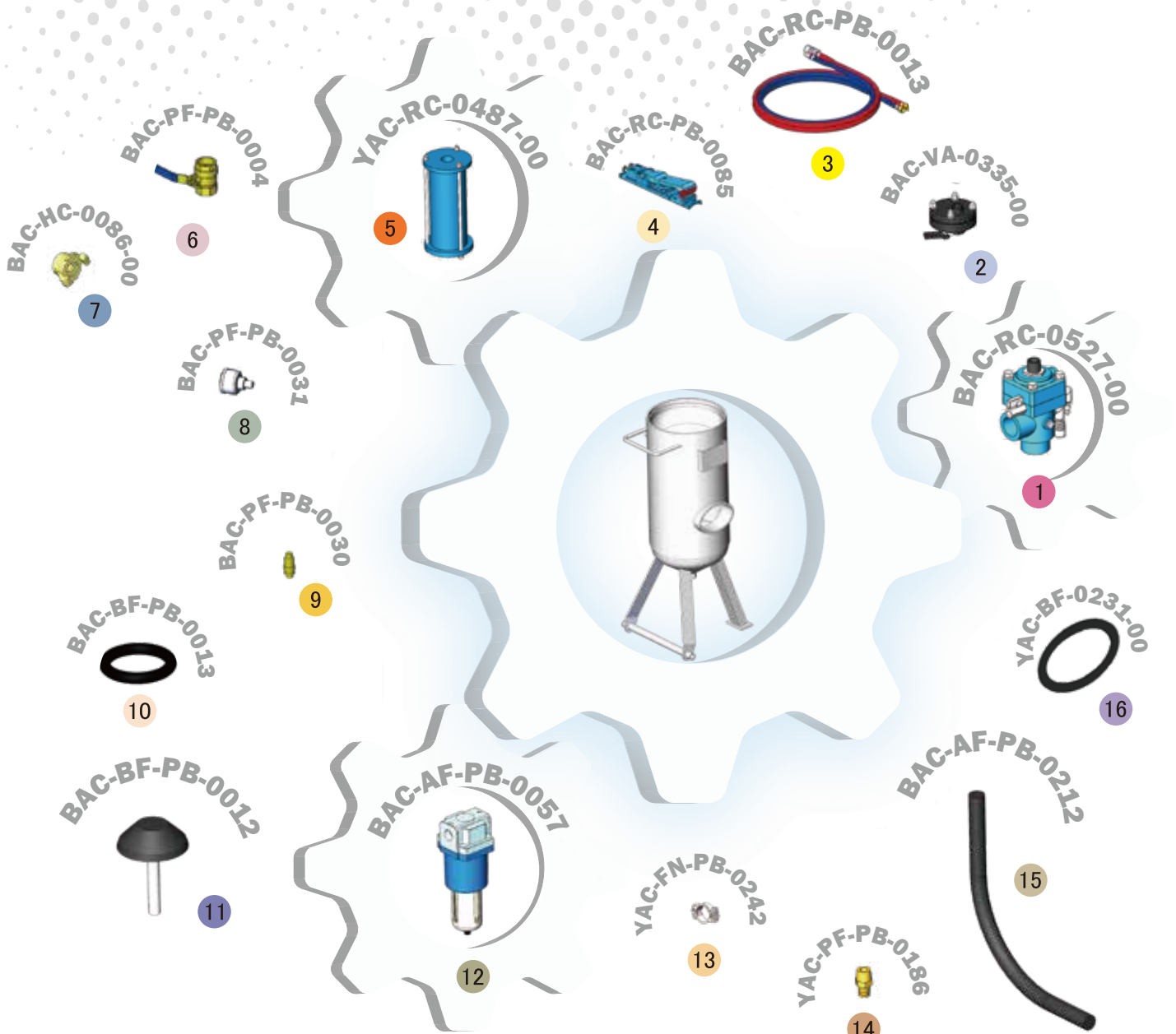
MY: Approved by Department of Occupational Safety and Health, Malaysia.

NZ: Approved by Department of Labour, New Zealand.

SG: Approved by Ministry of Manpower, Singapore.



All data and information subject to change without prior notice. Brochure reference CAT-0101-02-02



Parts List



Description	Qty	Description	Qty	Description	Qty
1 UniFlo Valve With Fittings - 90 Degree	1	7 STC-1/2 Steel Threaded Pot Coupling	1	13 Hose Clamp	2
2 Junior Plana NPT Valve	1	8 6 mm (1/4") Pressure Gauge - Rear Entry	1	14 KC Nipple	2
3 10 m (33') Twinline Hose Assembly	1	9 6 mm (1/4") 125psi Pressure Relief Valve	1	15 19 mm (3/4") Air Supply Hose	0.7 m
4 AirFlo Pneumatic Control Handle	1	10 Pop Up Valve Seating Ring	1	16 Blast Pot-H/Hole 192x144 -Sealing Gasket	1
5 Exhaust Muffler	1	11 Pop Up Valve - Stem Type	1		
6 19 mm (3/4") Ball Valve	2	12 19 mm (3/4") Port Moisture Separator	1		