

Blast Pots

- Automatic
- Manual
- Specialty
- Bulk



BP50-3 Blast Pots



Product Features

PanBlast™ BP Series Blast Pots are available in multiple configurations and specifications to suit varying market requirements worldwide. The BP50-3 is a compact, manual blast pot, suited for touch-up blasting and operation in confined spaces.

- ▶ Simple manual ball valve operation.
- ▶ Pressure gauge and relief valve included.
- ▶ Quick and easy parts replacement.
- ▶ 14 litres (0.5 ft³) abrasive capacity, 125 or 150 psi pressure rating.
- ▶ 13 mm (1/2") fittings.

Common Applications

- ▶ On site industrial and commercial blasting.
- ▶ Blast and painting contractor yard work.
- ▶ Blast room applications with or without abrasive recovery systems.
- ▶ In situ blasting in shipyards and slipways.

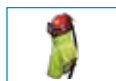
Complementary Products



Blast Hoses



ATN Blast Nozzles



Galaxy Blast Helmet



PBF II-1 Airline Filter



Couplings & Nozzle Holders



Hypodermic Needle Gauge

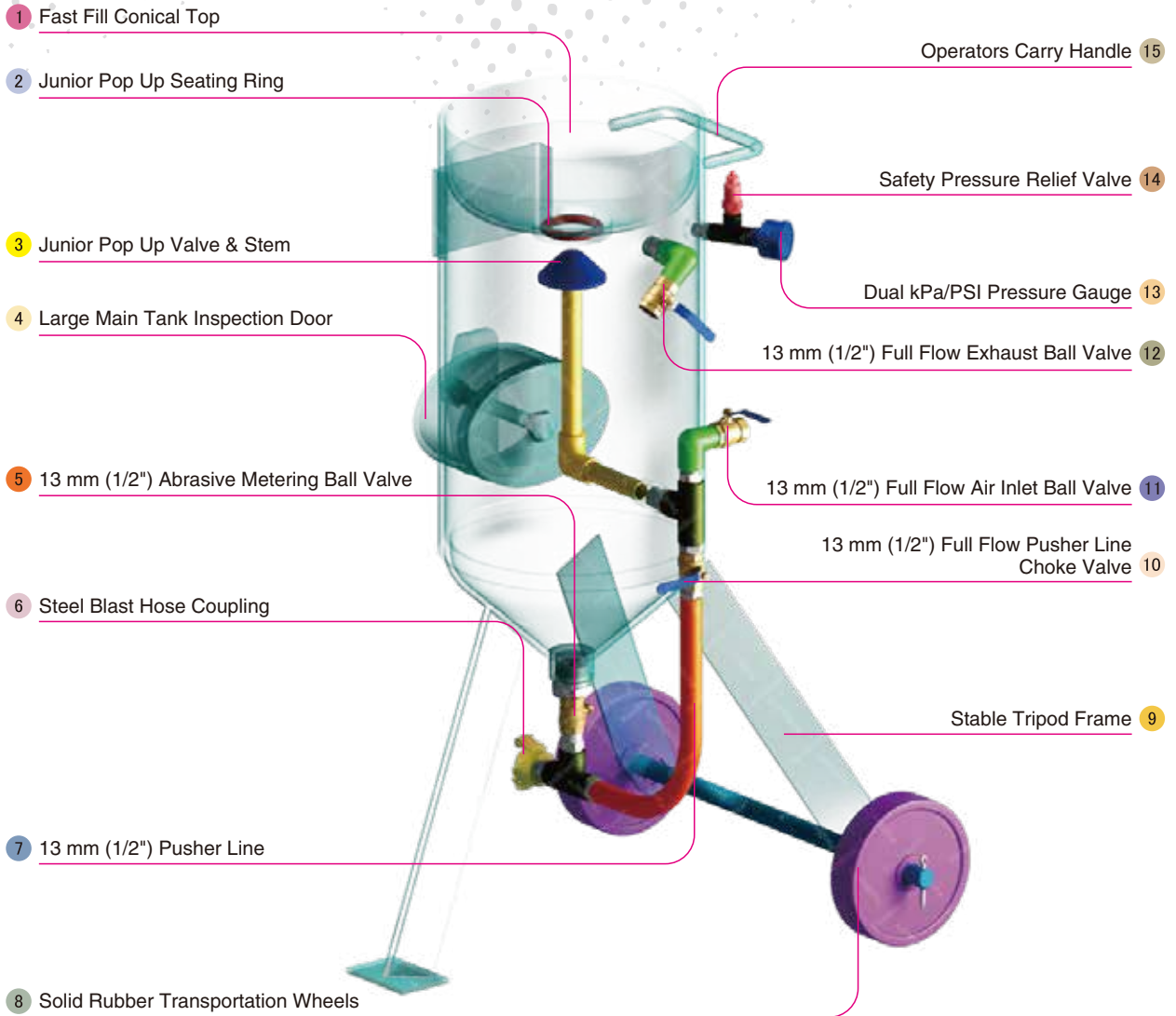
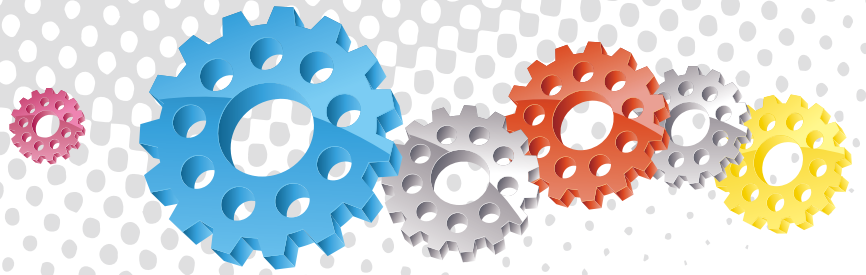


Whip Check Cables



Blasting Suit & Gloves

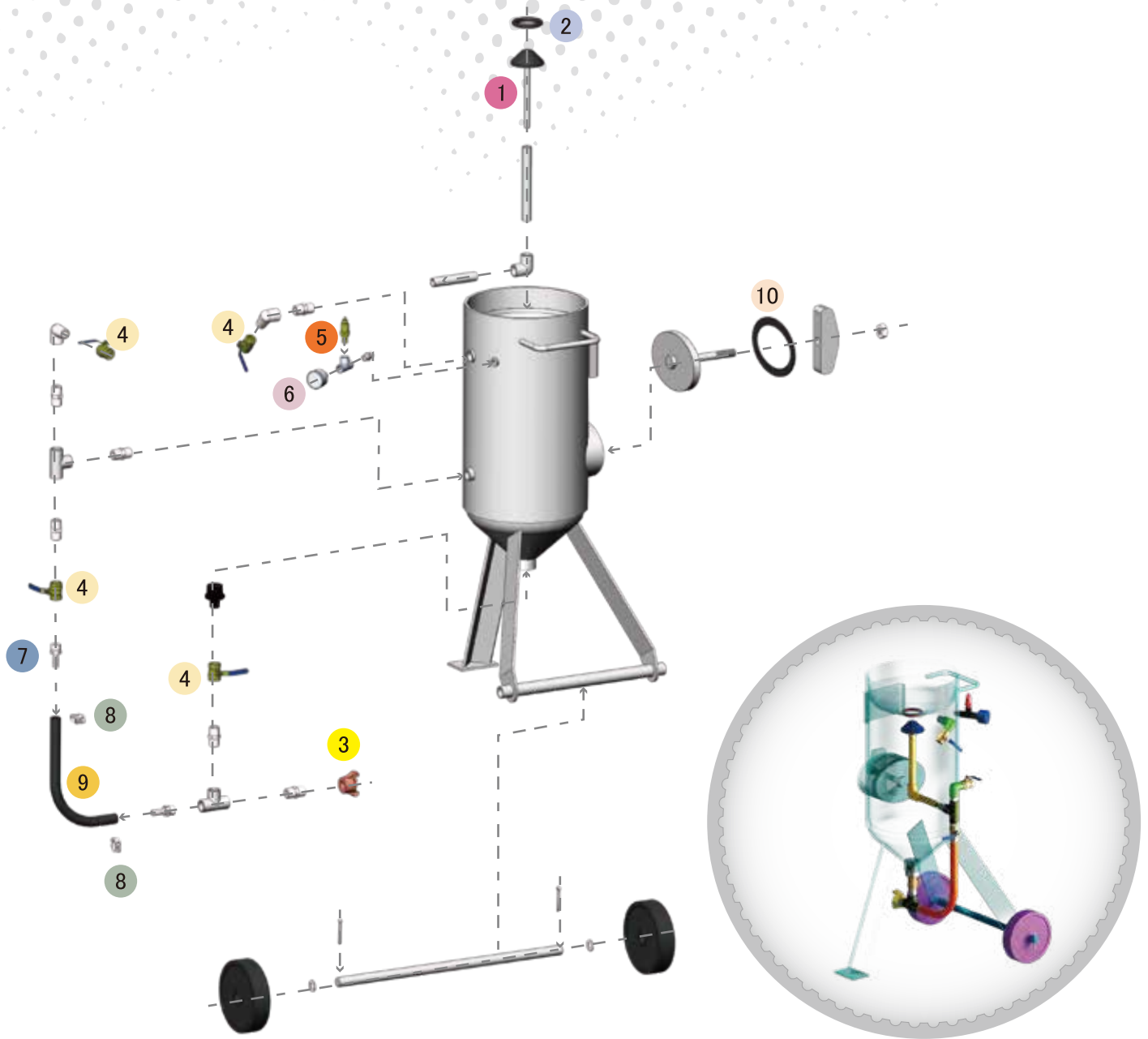
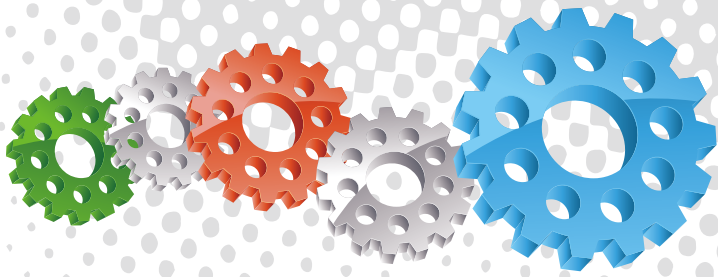
Note: Contact the local governing authority to determine if manually operated blast pots are suitable for use in your region.



Component Highlights



- | | | |
|---|---|--|
| 1 Fast Fill Conical Top | 6 Steel Blast Hose Coupling | 11 13 mm (1/2") Full Flow Air Inlet Ball Valve |
| 2 Junior Pop Up Seating Ring | 7 13 mm (1/2") Pusher Line | 12 13 mm (1/2") Full Flow Exhaust Ball Valve |
| 3 Junior Pop Up Valve & Stem | 8 Solid Rubber Transportation Wheels | 13 Dual kPa/PSI Pressure Gauge |
| 4 Large Main Tank Inspection Door | 9 Stable Tripod Frame | 14 Safety Pressure Relief Valve |
| 5 13 mm (1/2") Abrasive Metering Ball Valve | 10 13 mm (1/2") Full Flow Pusher Line Choke Valve | 15 Operators Carry Handle |



Assemblies

Stock Code	Description	Dry Weight	Abrasive Capacity	Piping Size
BEP-PS-PB-0018	BP50-3/AU Manual Ball Valve 150 PSI	43 kg (95 lbs)	14 litres (0.5 ft ³)	13 mm (1/2")
BEP-PS-0068-00	BP50-3/MY Manual Ball Valve	43 kg (95 lbs)	14 litres (0.5 ft ³)	13 mm (1/2")

Notation:

AU: Approved by Worksafe, Australia.

MY: Approved by Department of Occupational Safety and Health, Malaysia.



All data and information subject to change without prior notice. Brochure reference CAT-0102-01-00



Parts List



Description	Qty	Description	Qty	Description	Qty
1 Junior Pop Up Valve	1	5 6 mm (1/4") BSP - 125/150PSI Pressure Relief Valve	1	9 Pusher Line	1
2 Junior Seating Ring	1	6 6 mm (1/4") Pressure Gauge - Rear Entry	1	10 Blast Pot-H/Hole 192x144-Sealing Gasket	1
3 STC-0 Steel Threaded Pot Coupling	1	7 KC Nipple	2		
4 13 mm (1/2") Ball Valve	4	8 Hose Clamp	2		