

# 13

## Closed Circuit Blasters

■ Light Duty ■ Heavy Duty ■ Accessories & Kits



# AER215 Nuovo Closed Circuit Blaster



## Product Features

The PanBlast™ AER215 Nuovo Closed Circuit Blaster is a rugged heavy-duty unit suited for both field and shop environments. The trolley-mounted system features a portable blast pot; integral spent media vacuum recovery, multi-cyclone abrasive separation unit and an ultra lightweight ergonomic blast head and handle.

- ▶ Air operated – no electrical power required.
- ▶ Blasting and recovery confined to the blast head system.
- ▶ Dust free blasting in proximity to other operations.
- ▶ High efficiency multi-cyclone abrasive separation unit.
- ▶ Ultra lightweight ergonomic blast head and handle.
- ▶ Trolley-mount with wheels and hose reel for portability.
- ▶ Pressure blast feed system.
- ▶ Filtered discharge air.

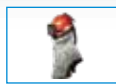
## Common Applications

- ▶ Blasting of parts in both shop and field environments.
- ▶ Touch up blasting for weld joints in both shop and field environments.
- ▶ Spot blasting in dust-sensitive environments.

## Complementary Products



AER85 Vacuum Blaster



Cosmo SAR



Airless Spray Pumps



Pow Air Vac



ProFlo Recycling System



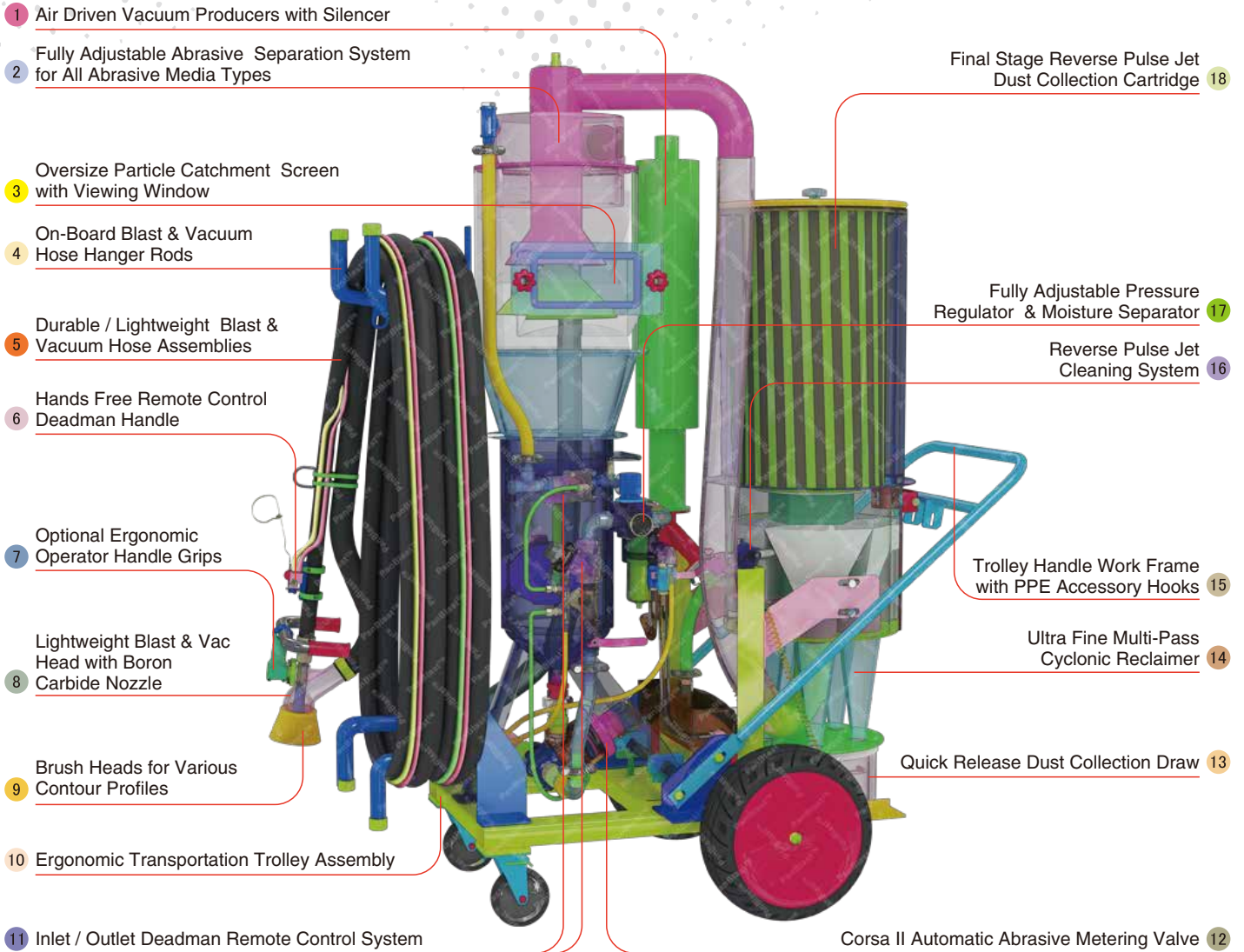
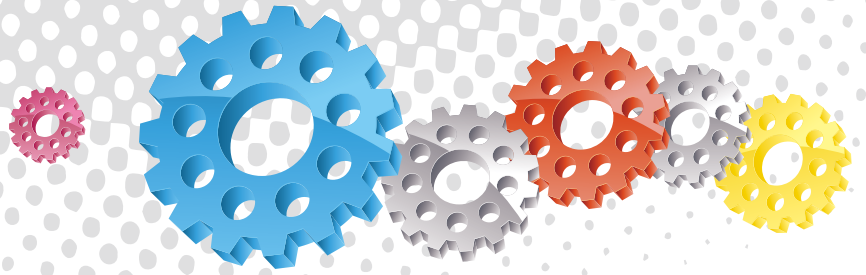
AIN Blast Nozzles



Wet Head



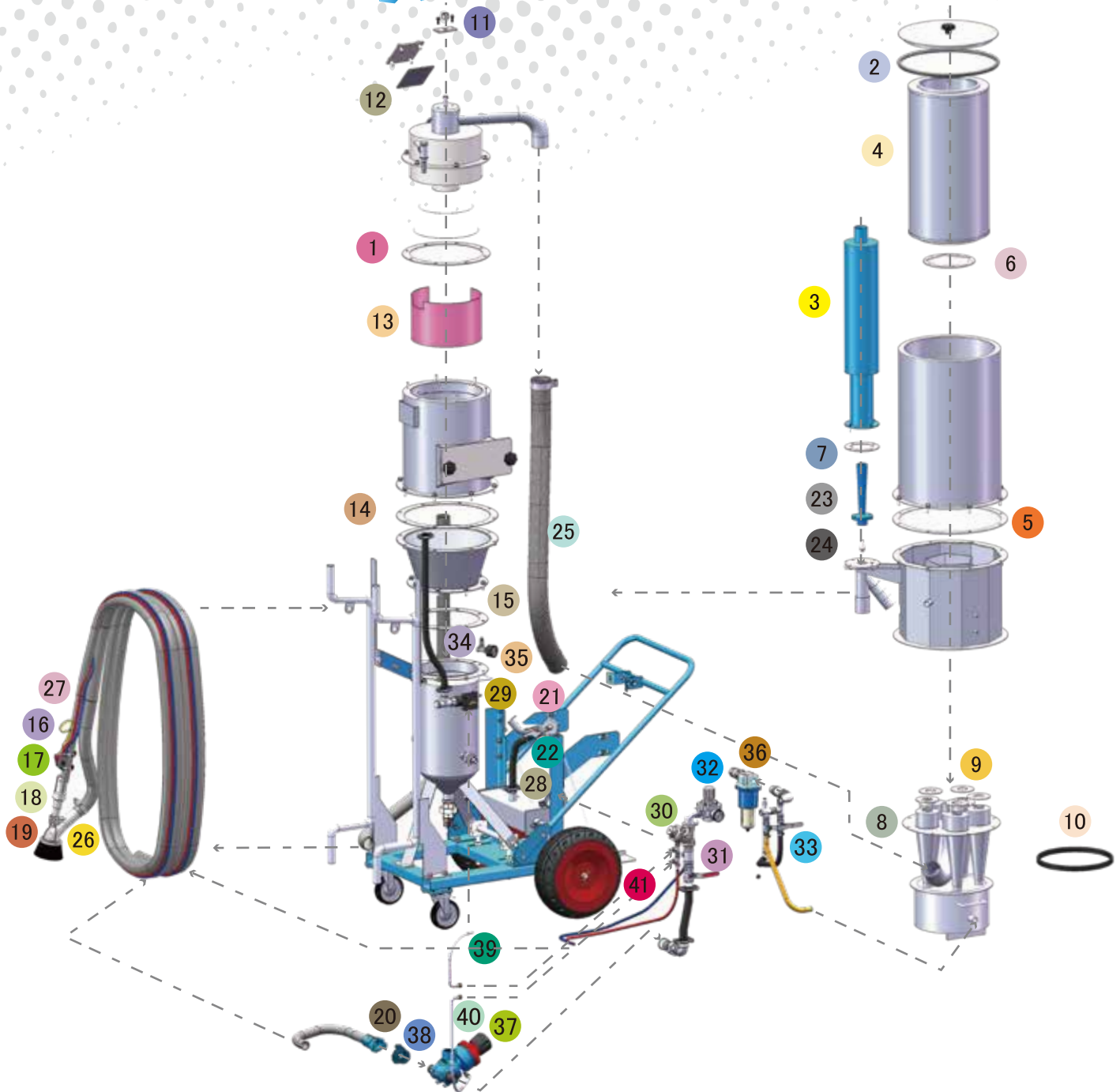
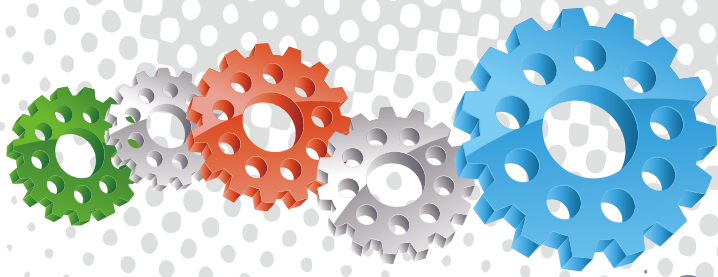
AirFlo Pneumatic Handle



## Component Highlights



- |  |  |   |
|--|--|---|
| 1 Air Driven Vacuum Producers with Silencer                                | 7 Optional Ergonomic Operator Handle Grips               | 13 Quick Release Dust Collection Draw                       |
| 2 Fully Adjustable Abrasive Separation System for All Abrasive Media Types | 8 Lightweight Blast & Vac Head with Boron Carbide Nozzle | 14 Ultra Fine Multi-Pass Cyclonic Reclaimer                 |
| 3 Oversize Particle Catchment Screen with Viewing Window                   | 9 Brush Heads for Various Contour Profiles               | 15 Trolley Handle Work Frame with PPE Accessory Hooks       |
| 4 On-Board Blast & Vacuum Hose Hanger Rods                                 | 10 Ergonomic Transportation Trolley Assembly             | 16 Reverse Pulse Jet Cleaning System                        |
| 5 Durable / Lightweight Blast & Vacuum Hose Assemblies                     | 11 Inlet / Outlet Deadman Remote Control System          | 17 Fully Adjustable Pressure Regulator & Moisture Separator |
| 6 Hands Free Remote Control Deadman Handle                                 | 12 Corsa II Automatic Abrasive Metering Valve            | 18 Final Stage Reverse Pulse Jet Dust Collection Cartridge  |



## Assembly

Stock Code  
BEC-RV-0128-00

Description  
AER215 Nuovo Closed Circuit Blaster

Weight  
370 kg (816 lbs)

## Optional Accessories

Stock Code  
BAC-RV-0174-00  
BAC-RV-0175-00  
BAC-RV-0176-00

Description  
AER215 Nuovo Ergonomic Handle Kit  
AER215 Nuovo Hose Support Kit  
AER215 Nuovo Profile Brush Kit



All data and information subject to change without prior notice. Brochure reference CAT-0802-01-00

## Parts List

Item	Stock Code	Description	Qty
1	YAC-RV-0182-00	Reclaimer Top Gasket	1
2	YAC-CA-PB-0305	Rubber Door Seal	1.4 m
3	YAC-RV-0153-00	Muffler	1
4	BAC-DF-0025-00	Filter Cartridge -Size 7 Open/Open	1
5	YAC-RV-0156-00	Filter Shell Gasket	1
6	YAC-RV-0150-00	Filter Seal	1
7	YAC-RV-0158-00	Muffler Gasket	1
8	YAC-RV-0143-00	Multi Cyclone Assembly	1
9	YAC-RV-0151-00	Cyclone Gasket	5
10	YAC-CA-PB-0375	Dust Collector Door Seal	1.1 m
11	YAC-RV-0190-00	Gasket	1
12	YAC-RV-0200-00	Wear Plate Gasket	1
13	YAC-RV-0224-00	Wear Plate-Lined	1
14	YAC-RV-0185-00	Reclaimer Gasket	1
15	YAC-RV-0157-00	Pot Gasket	1
16	BAC-RC-0236-04	Quikstop IIS Pneumatic Control Handle	1
17	BAC-NZ-PB-0173	NNH-1/2 Nylon Nozzle Holder	1
18	BAC-NZ-0604-00	Nuovo Nozzle ABN-4	1
19	BAC-RV-PB-0083	AER215 Recovery Head Assy C/W Flat Brush	1
20	BAC-HC-PB-0001	NHC-1 Nylon Hose Coupling	1
21	BAC-DC-PB-0007	Pulse Valve	1
22	YAC-CA-PB-0145	1/4" Blow Off Gun	1
23	YAC-RV-0146-00	Venturi	1
24	YAC-RV-0147-00	Ejector	1
25	YEB-AR-0005-01	Recovery Hose	1
26	YAC-RV-0206-00	Recovery Hose	1
27	BAC-HB-PB-0024	Blast Hose 19 mm X 34 mm X 10 m L2	10 m
28	YAC-RV-0205-00	Pulse Hose	1
29	BAC-RC-PB-0018	Sola 5 NPT Exhaust Valve	1
30	BAC-RC-PB-0275	1" Tandem NPT Valve Assembly	1
31	BAC-PF-PB-0003	25 mm (1") Ball Valve	2
32	BAC-AF-PB-0089	25 mm (1") Pressure Regulator With Gauge	1
33	BAC-PF-PB-0001	13 mm (1/2") Ball Valve	2
34	BAC-PF-PB-0030	6 mm (1/4")-125 PSI Pressure Relief Valve	1
35	BAC-PF-PB-0031	6 mm (1/4") Pressure Gauge - Rear Entry	1
36	BAC-AF-PB-0166	25 mm (1") Port Moisture Separator	1
37	BAC-VA-PB-0117	Corsa II 1-1/4" With Urethane Sleeve	1
38	BAC-HC-PB-0009	NTC-1 Nylon Threaded Pot Coupling	1
39	YAC-RC-0628-00	Connecting Hose	1
40	YAC-RC-0629-00	Connecting Hose	1
41	BAC-RC-0656-00	10 m (33') Twinline Hose Assembly	1

## Technical Data



- **Compressed Air Requirement:** 230 m<sup>3</sup>/hr (135 cfm)
- **Blast Nozzle:** 6 mm (1/4")
- **Hose Length:** 10 m (32 ft)
- **Abrasives Capacity:** 14 liters (0.5 ft<sup>3</sup>)
- **Blasting Cycle:** 10 min

