

14

## Abrasive Recycling Systems

■ Low Volume ■ Medium Volume ■ High Volume



# ProFlo Abrasive Recycling System



## Product Features

The PanBlast™ ProFlo Abrasive Recycling System is a manually loaded abrasive cleaning system combining an air wash stage with a screening system. The system is designed for use with a single pressure blast pot.

- ▶ Fully adjustable abrasive air wash system removes dust.
- ▶ Simple, efficient bucket elevator system.
- ▶ Single cartridge dry dust collection system with reverse pulse cartridge purging.
- ▶ 240 Volt single-phase electrical power.
- ▶ Cleans garnet abrasive at 3,000 kg (6,600 lbs) per hour.
- ▶ Compatible with most commercial abrasive types.
- ▶ Optional stabilizer bars available for the elevator base plate frame.

## Common Applications

- ▶ Extend recyclable abrasive life.
- ▶ Maintain abrasive efficiency by removing dust and debris.
- ▶ Reduce operating costs.

## Complementary Products



Pressure Blast Pots



PBF Filter Cartridge



PBF II-3 Airline Filter



Blast Hoses



Pow Air Vac



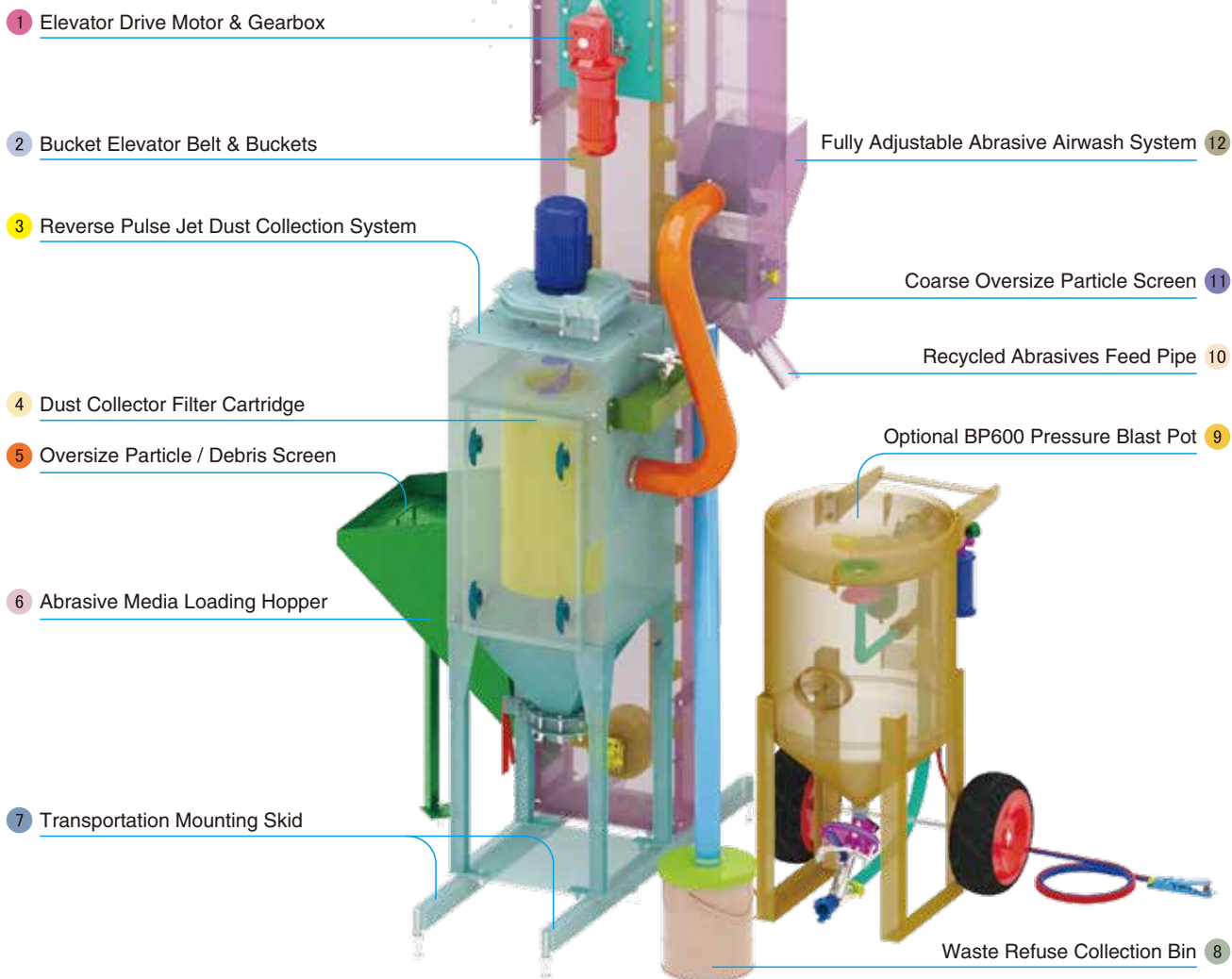
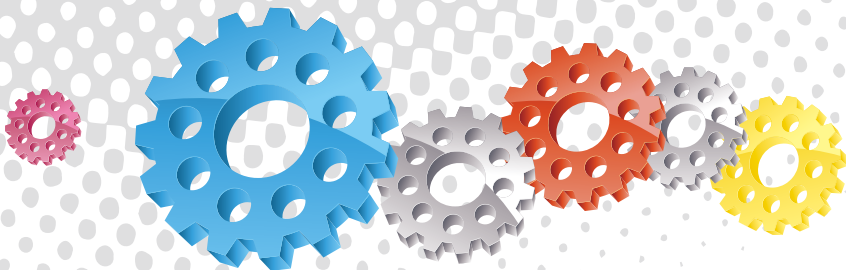
Cosmo SAR



Air Cooling Controller



ATN Blast Nozzles



## Component Highlights



1 Elevator Drive Motor & Gearbox

2 Bucket Elevator Belt & Buckets

3 Reverse Pulse Jet Dust Collection System

4 Dust Collector Filter Cartridge

5 Oversize Particle / Debris Screen

6 Abrasive Media Loading Hopper

7 Transportation Mounting Skid

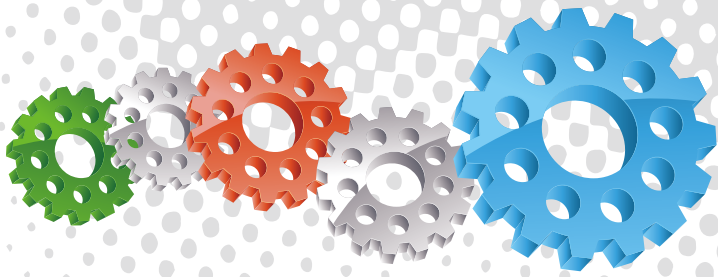
8 Waste Refuse Collection Bin

9 Optional BP600 Pressure Blast Pot

10 Recycled Abrasives Feed Pipe

11 Coarse Oversize Particle Screen

12 Fully Adjustable Abrasive Airwash System



## Assembly

Stock Code	Description	Weight
BEB-AR-PB-0001	ProFlo Abrasive Recycling System	780 kg (1720 lbs)

## Optional Accessories

Stock Code	Description	Include Items
YAC-AE-0037-00	ProFlo – Stabiliser Bar Kit	19



All data and information subject to change without prior notice. Brochure reference CAT-0902-01-02



## Parts List



Description	Qty	Description	Qty	Description	Qty
1 230VAC 1PH 50HZ Motor	1	7 Dust Collector Door Seal	2.3 m	13 Recovery Hose	1
2 4Ply 100 mm x 5.66 m Elevator Belt	1	8 Handle Tongue	4	14 Block Bearing	2
3 Elevator Bucket	37	9 Filter Cartridge Washer	1	15 Crown Pulley Lagged	1
4 700 mm Hanger Rod	1	10 Butterfly Valve - 4"	1	16 Flange Bearing	2
5 Filter Cartridge - Size 2 (Open/Close)	1	11 M6 Bolt - Special	74	17 Crown Pulley	1
6 Pulse Valve	1	12 Washer - Special	74	18 230VAC 1PH 50HZ Motor	1