



**PRODUCT OPERATING MANUAL**

**Manual No. ZVP-PC-0061-01**

**AIRFLO PNEUMATIC REMOTE  
CONTROL HANDLE**

**SECTION**

- 1. GENERAL INFORMATION**
- 2. INTRODUCTION**
- 3. PREPARATION FOR OPERATION**
- 4. OPERATING INSTRUCTIONS**
- 5. MAINTENANCE**
- 6. TROUBLE SHOOTING GUIDE**
- 7. ASSEMBLIES, PARTS LISTING & EXPLODED VIEW**

Panblast Pte Ltd  
2 Woodlands Sector 1  
#05-20 Woodlands Spectrum I  
Singapore 738068  
Tel: 65-6586-1583  
Fax: 65-6586-1563  
Email: [inquiries@panblast.com](mailto:inquiries@panblast.com)

Website: [www.panblast.com](http://www.panblast.com)

*An ISO9001:2008 Quality Management  
System Certified Company*



## PRODUCT OPERATING MANUAL

### 1.0 GENERAL INFORMATION

1.1 All products and equipment designed and manufactured by Pan Abrasives are intended for use by experienced users of abrasive blasting equipment and its associated operations and abrasive blasting media.

1.2 It is the responsibility of the user to:

1.2.1 Determine if the equipment and abrasive media is suitable for the users' intended use and application.

1.2.2 Familiarize themselves with any appropriate laws, regulations and safe working practices which may apply within the users' working environment.

1.2.3 Provide appropriate operator training and a safe working environment including operator protective equipment such as, but not limited to, blasting suit, safety footwear, protective eyewear and hearing protection.

1.3 Pan Abrasives Standard Terms and Conditions of Sale apply. Contact your local Pan Abrasives office or distributor should you require any further information or assistance.

**⚠ ! WARNING ! - READ THIS SECTION CAREFULLY BEFORE USING THIS EQUIPMENT.**

1.4 Heavy metal paint, asbestos and other toxic material dusts will cause serious lung disease or death without the use of properly designed and approved air supplied respiratory equipment by blast operators and all personnel within the work site area.

1.5 The compressor must have adequate output and the plumbing between the compressor and the point of attaching the air supply hose must have sufficient capacity to supply the volume of air at the pressure required

#### 1.6 Standard Safety Precautions

1.7 Approved safety eyewear, hearing and footwear protection should be worn at all times by the operator and anyone else in the immediate area that may be exposed to any hazards generated by the abrasive blasting process.

1.8 Suitably approved respiratory protection should also be worn when handling abrasive media, abrasive refuse dust and when carrying out any service/maintenance work where any dust may be present.

1.9 Any work performed on electrical wiring or components must only be carried out by suitably qualified and registered electrical trades' personnel.

1.10 Under no circumstances should any safety interlocks or features be altered or disabled in

any way.

1.11 All equipment must be isolated from the compressed air supply and electrical power source prior to any service or maintenance work being carried out.

1.12 All care must be taken by the operator when lifting or moving equipment or components in order to prevent injury. Pressure Blast Pots must always be emptied of abrasive media before any attempt is made to move them.

1.13 Any modification of the equipment or use of non genuine PanBlast™ replacement parts will void warranty.

1.14 Always check the Material Safety Data Sheet on the abrasive being used to ensure that it is free of harmful substances, in particular, free silica, cyanide, arsenic or lead.

1.15 Test the surface to be blasted for harmful substances, taking the appropriate measures and precautions to ensure the safety of the operator and others.

1.16 The operator should carry out a daily inspection before start up of all wearing and safety items to ensure that they are in correct operating order. In particular check all blast hose couplings and nozzle holders, ensuring that all couplings have engaged correctly and the Safety Locking Pins are fitted and in good condition. Always install safety whip check cables at every connection. Ensure that the blast nozzle has been securely screwed into the nozzle holder and the nozzle holder has been secured to the blast hose correctly and that all screws are engaged.

### 2.0 INTRODUCTION

2.1 These instructions cover the installation, operation and maintenance of the PanBlast™ AirFlo Pneumatic Remote Control Handle series in pneumatic configurations.

2.2 The PanBlast™ AirFlo Pneumatic Remote Control Handle is an air "bleed off" style deadman handle used for the remote control of abrasive blast pots. When operated it supplies a pneumatic signal to the blast pot remote control system which then activates the blasting process.

2.3 It can be used with the PanBlast™ range of remote control valve systems such as the UniFlo, Helix, Sola, Kombi, Tandem and Pinch Valve System.

**NOTE: UNDER OSHA 1915:34(c)(1)(iv) DEADMAN CONTROL. A DEADMAN CONTROL DEVICE SHALL BE PROVIDED AT THE NOZZLE**



## PRODUCT OPERATING MANUAL

END OF THE BLAST HOSE EITHER TO PROVIDE DIRECT CUTOFF OR TO SIGNAL THE POT TENDER BY MEANS OF A VISUAL AND AUDIBLE SIGNAL TO CUT OFF THE FLOW, IN THE EVENT THE BLASTER LOSES CONTROL OF THE HOSE. THE POT TENDER SHALL BE AVAILABLE AT ALL TIMES TO RESPOND IMMEDIATELY TO THE SIGNAL.

### 3.0 PREPARATION FOR OPERATION

3.1 Attach the AirFlo deadman control handle to the blast hose behind the nozzle holder using robust bands or strapping. Trim any excess after fixing the handle so that they don't catch or interfere with the operator during blasting.

3.2 Connect the Tinline Hose fittings ensuring that the supply line is connected to the inlet port and the return signal line is connected to the outlet port.

**⚠ ! WARNING ! - INCORRECT CONNECTION OF THE TWINLINE HOSE FITTINGS TO THE REMOTE CONTROL HANDLE OR REMOTE CONTROL VALVE MAY CAUSE PREMATURE PRESSURIZATION OF THE SYSTEM RESULTING IN SERIOUS INJURY OR DEATH.**

3.3 The Tinline Hose should be strapped to the Blast Hose at 1 metre intervals.

3.4 Connect the two end fittings to the control valve via the Quick Disconnect Fitting supplied with the Tinline Hose assembly and those supplied on the Remote Control Valve.

### 4.0 OPERATING INSTRUCTIONS

**⚠ ! WARNING ! - READ THIS SECTION CAREFULLY BEFORE USING THIS EQUIPMENT/ APPARATUS.**

4.1 PanBlast™ AirFlo deadman control handle is a "bleed off" style deadman handle. When the handle is in the "Up" or un-activated position the air supply from the blast pot supply is bled off to atmosphere via an orifice in the handle manifold. When the handle is "Down" or in the activated position the orifice is closed off and a return signal is supplied to the blast pot remote control system activating the blast pot and initializing the blast process.

4.2 Before pressurizing the system check the operation of the handle, is the deadman latch operational? Does it snap back to the "Up" position on releasing of the lever handle?

Does the lever handle spring back when released? Ensure it is free in its action.

4.3 Connect the blast pot to an air supply that is adequate for the application, check the nozzle air requirement and the minimum air pressure required to operate the remote control valve.

4.4 Ensure that the mini ball valve or pet cock on the remote control valve has been closed.

4.5 Check that the air is escaping from the bleed orifice on the handle manifold when the main air supply valve is opened.

4.6 After following all start up procedures as detailed in the abrasive blast pot manual, pull back the safety lever lock, hold this lever down and depress the lever handle. This will close off the air bleeding from the manifold and initiate the blasting process. Blasting will begin within a few seconds.

4.7 To stop blasting, release the lever handle, the safety lever lock will snap up preventing the lever handle from being depressed and air will again bleed off from the handle manifold. Blasting will cease within 2-3 seconds.

**⚠ ! WARNING ! - THE LEVER MUST NEVER BE WIRED OR BANDED DOWN PERMANENTLY WHICH MAY RESULT IN PREMATURE ACTIVATION OF THE SYSTEM THAT MAY CAUSE SERIOUS INJURY OR DEATH.**

### 5.0 MAINTENANCE

5.1 Check the operation of the safety lever lock and lever handle on a regular basis.

5.2 Replace any broken or faulty components immediately.

5.3 Check the condition of the bumper button on the underside of the lever handle, and replace the bumper button if it no longer seals off the bleed hole.

5.4 Periodically check that the restricted hole in the inlet fitting to the handle is clear and has not reduced in size due to dust and moisture build up.

5.5 Ensure that the handle strapping is in good order, replace as required.



## PRODUCT OPERATING MANUAL

### 6.0 TROUBLE SHOOTING GUIDE

PROBLEM	PROBABLE SOLUTION
<p><b>The lever is depressed but the Remote Control Valve does not activate.</b></p>	<p>Ensure that the "Safety" mini ball valve or pet cock on the Remote Control Valve has been closed.</p>
	<p>Check that the air is escaping from the bleed off hole in the handle manifold with the handle in the "Up" position. If not, check for air leaks in the supply line to the handle and check the inlet fitting to ensure that it is not blocked.</p>
	<p>Check that the bumper button is sealing on the manifold orifice, there should be no air leakage from the orifice when the handle is depressed.</p>
<p><b>The Lever does not pop up when released.</b></p>	<p>Check that the handle lever spring has not been damaged and is free in its action. Replace if required.</p>
	<p>Check that the handle lever pin is not jammed due to intrusion of abrasive dust.</p>
<p><b>The "Safety Lock-Out" button does not spring back to the "Safety Lock-Out" position.</b></p>	<p>Check that the "Safety Lock-Out" button has not seized in the Remote Control Handle body housing, or has not been damaged it should always be free in its action and not jammed due to abrasives dust</p>
<p><b>The system starts up as soon as air is turned on without the Lever handle depressed.</b></p>	<p>Check that the Twinline is connected correctly, i.e.: the "live" supply line is connected to the correct inlet port and the signal line to the correct outlet port.</p>
	<p>Check that the plunger is free in its movement and ensure that the bleed hole is free and clear of any obstruction.</p>
	<p>Refer to the Pressure Blast Machine Remote Control Valve for correct and functional operation.</p>



## PRODUCT OPERATING MANUAL

### 7.0 ASSEMBLIES, PARTS LISTING & EXPLODED VIEW

#### 7.1 AirFlo Remote Control Handle BSP – Assembly

Stock Code	Description	Weight
BAC-RC-PB-0085	AirFlo Pneumatic Control Handle	0.43 kg (0.95 lbs)

#### 7.2 AirFlo Remote Control Handle BSP – Pneumatic Parts Listing

Item	Stock Code	Description	Qty
1	YAC-RC-PB-0058	Body	1
2	BAC-RC-PB-0059	Lever	1
3	YAC-RC-PB-0060	Pneumatic Manifold	1
4	YAC-RC-PB-0061	Lever Safety Lock	1
5	YAC-RC-PB-0062	Gasket	1
6	YAC-RC-PB-0063	Bumper Button	1
7	YAC-RC-PB-0064	Restricted Nipple	1
8	YAC-RC-PB-0087	Reducing Nipple	1
9	YAC-RC-PB-0065	Safety Lock Spring	1
10	YAC-RC-PB-0066	Screw	2
11	YAC-FN-PB-0158	Screw	2
12	YAC-FN-PB-0159	Screw	4
13	YAC-FN-PB-0141	M4 Lock Nut	2
14	YAC-RC-PB-0067	Lever Spring	1

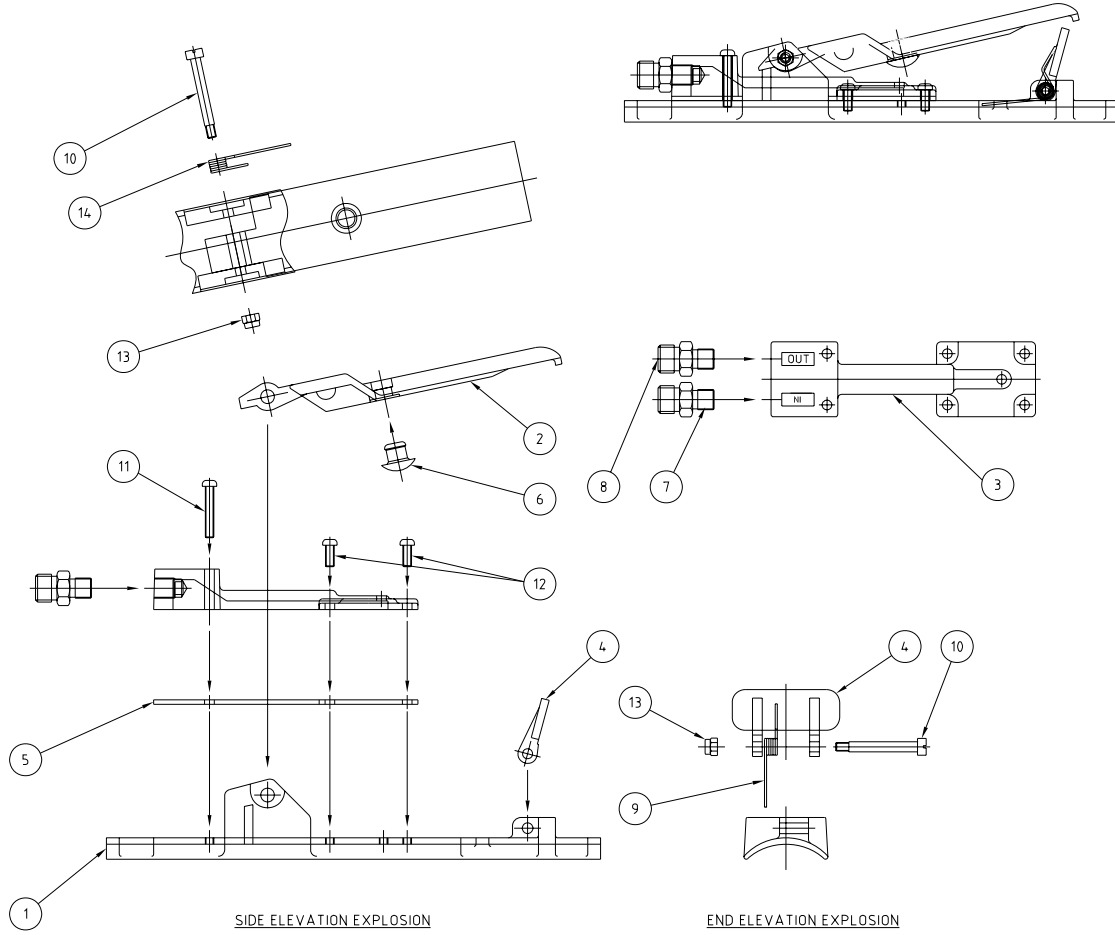
#### 7.3 AirFlo Remote Control Handle BSP – Pneumatic Service Kits

Stock Code	Description
BAC-RC-PB-0011	AirFlo Handle Service Kit - Items 2, 4, 5, 6, (6 off), 9 & 14
BAC-RC-PB-0116	AirFlo Handle Bumper Kit - Item 6 (6 off)
BAC-RC-PB-0117	AirFlo Handle Lever Spring Kit - Item 14 (6 off)



**PRODUCT OPERATING MANUAL**

**7.4 Product Exploded View - AirFlo Remote Control Handle BSP - Pneumatic**





## PRODUCT OPERATING MANUAL

### 7.5 AirFlo Remote Control Handle NPT – Pneumatic Assembly

Stock Code	Description	Weight
BAC-RC-PB-0139	AirFlo NPT Control Handle	0.43 kg (0.95 lbs)

### 7.6 AirFlo Remote Control Handle NPT – Pneumatic Parts Listing

Item	Stock Code	Description	Qty
1	YAC-RC-PB-0140	Body	1
2	BAC-RC-PB-0141	AirFlo NPT Lever	1
3	YAC-RC-PB-0136	Manifold	1
4	YAC-RC-PB-0061	Lever Safety Lock	1
5	YAC-RC-PB-0062	Gasket	1
6	YAC-RC-PB-0063	Bumper Button	1
7	YAC-RC-PB-0137	Reducing Nipple - NPT - Restricted	1
8	YAC-RC-PB-0138	Reducing Nipple - NPT	1
9	YAC-RC-PB-0065	Safety Lock Spring	1
10	YAC-RC-PB-0066	Screw	2
11	YAC-FN-PB-0139	Screw	2
12	YAC-FN-PB-0140	Screw	4
13	YAC-FN-PB-0141	M4 Lock Nut	2
14	YAC-RC-PB-0067	Lever Spring	1

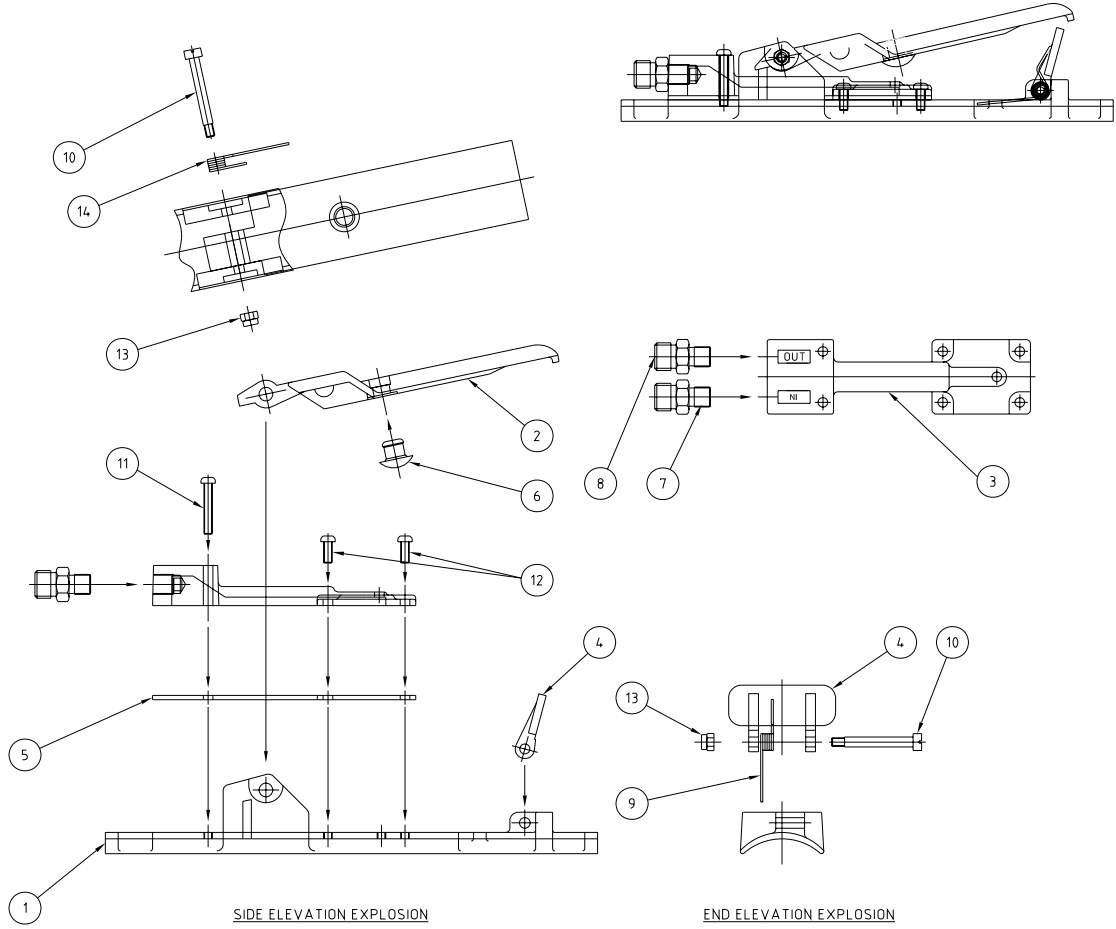
### 7.7 AirFlo Remote Control Handle NPT – Pneumatic Service Kits

Stock Code	Description
BAC-RC-0524-00	AirFlo UNF Control Handle Service Kit - Items 4, 5, 6,7,8,9,10,11,12 & 13
BAC-RC-PB-0116	AirFlo Bumper Kit - Item 6 (6 off)
BAC-RC-PB-0117	AirFlo Lever Spring Kit - Item 14 (6 off)



# PRODUCT OPERATING MANUAL

## 7.8 Product Exploded View - AirFlo Remote Control Handle NPT - Pneumatic





## PRODUCT OPERATING MANUAL

### 7.9 AirFlo Handle Assy c/w Unres. JIC Fitting - Assembly

Stock Code	Description	Weight
BAC-RC-0525-00	AirFlo Handle With Unres JIC Fitting	0.43kg (0.95lbs)

### 7.10 AirFlo Handle Assy c/w Unres. JIC Fitting - Parts Listing

Item	Stock Code	Description	Qty
1	YAC-RC-PB-0058	Body	1
2	YAC-RC-PB-0062	Gasket	1
3	YAC-RC-PB-0060	Pneumatic Manifold	1
4	YAC-FN-PB-0158	Screw	2
5	BAC-RC-PB-0059	Lever	1
6	YAC-FN-PB-0141	M4 Nut Lock	2
7	YAC-RC-PB-0067	Lever Spring	1
8	YAC-RC-PB-0066	Screw	2
9	YAC-RC-PB-0088	BSP/UNF Reducing Nipple	2
10	YAC-RC-PB-0063	Bumper Button	1
11	YAC-FN-PB-0159	Screw	4
12	YAC-RC-PB-0061	Lever Safety Lock	1
13	YAC-RC-PB-0065	Safety Lock Spring	1

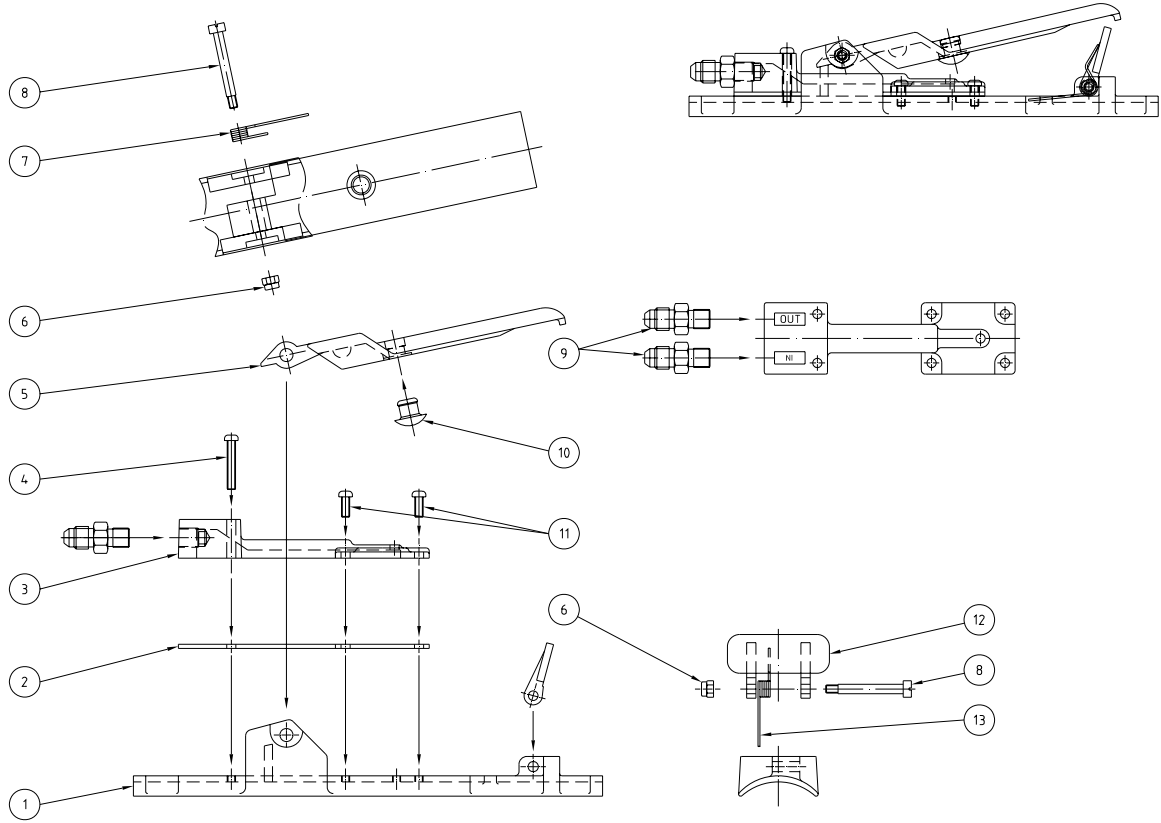
### 7.11 AirFlo Handle Assy c/w Unres. JIC Fitting - Service Kits

Stock Code	Description
BAC-RC-PB-0011	AirFlo Handle Service Kit (Item2, 5, 7, 10, 12, 13)
BAC-RC-PB-0116	AirFlo Handle Bumper Button Kit. Item10 (6 off)
BAC-RC-PB-0117	AirFlo Handle Lever Spring Kit. Item7 (6 off)



## PRODUCT OPERATING MANUAL

### 7.12 Product Exploded View - AirFlo Handle Assy c/w Unres. JIC Fitting





## PRODUCT OPERATING MANUAL

### 7.13 AirFlo Handle Assy c/w JIC Fitting - Assembly

Stock Code	Description	Weight
BAC-RC-0494-00	AirFlo Control Handle With JIC Fitting	0.47kg (1.038lbs)

### 7.14 AirFlo Handle Assy c/w JIC Fitting - Parts Listing

Item	Stock Code	Description	Qty
1	YAC-RC-PB-0058	Body	1
2	YAC-RC-PB-0062	Gasket	1
3	YAC-RC-PB-0060	Pneumatic Manifold	1
4	YAC-FN-PB-0158	Screw	2
5	BAC-RC-PB-0059	Lever	1
6	YAC-FN-PB-0141	M4 Nut Lock	2
7	YAC-RC-PB-0067	Lever Spring	1
8	YAC-RC-PB-0066	Screw	2
9	YAC-RC-PB-0088	BSP/UNF Reducing Nipple	1
10	YAC-RC-PB-0089	BSP/UNF Reducing Nipple Restricted	1
11	YAC-RC-PB-0063	Bumper Button	1
12	YAC-FN-PB-0159	Screw	4
13	YAC-RC-PB-0061	Lever Safety Lock	1
14	YAC-RC-PB-0065	Safety Lock Spring	1

### 7.15 AirFlo Handle Assy c/w JIC Fitting - Service Kits

Stock Code	Description
BAC-RC-PB-0011	AirFlo Handle Service Kit (Item2, 5, 7, 11, 13, 14)
BAC-RC-PB-0116	AirFlo Handle Bumper Button Kit. Item11 (6 off)
BAC-RC-PB-0117	AirFlo Handle Lever Spring Kit. Item7 (6 off)



**PRODUCT OPERATING MANUAL**

**7.16 Product Exploded View - AirFlo Handle Assy c/w JIC Fitting**

